

# LESSON 15: REVIEW

Date: \_\_\_\_\_

- Write the following close triads in whole notes, using a key signature where applicable.
  - the supertonic triad of F+, in second inversion
  - the augmented triad of d#-, in first inversion
  - a diminished triad with Fb as the third, in root position
  - VI<sup>6</sup> of c-.

A musical staff with a treble clef, divided into four measures labeled a), b), c), and d). Each measure is currently empty, intended for the student to write the specified triads.

- Determine all the keys in which each of the following triads occur.

A musical staff with a bass clef showing five triads:
 

- F major triad (F, A, C)
- D major triad (D, F#, A)
- F major triad (F, A, C)
- F major triad (F, A, C)
- D major triad (D, F#, A)

- Complete the following chart, summarizing the **qualities of seventh chords** (root position) build on scales degrees of major and harmonic minor scales. Write the Roman numerals, including Arabic superscripts and any additional quality characters required for each scale degree. Use the given examples as a guide.

Scale Degree	<sup>^</sup> 1	<sup>^</sup> 2	<sup>^</sup> 3	<sup>^</sup> 4	<sup>^</sup> 5	<sup>^</sup> 6	<sup>^</sup> 7
Major Scales			iii <sup>7</sup>				
Minor Scales	N/A		N/A			VI <sup>M7</sup>	

4. Identify each seventh chord using its name: major, minor, dominant, diminished, or half-diminished. Then, determine the key(s) and corresponding Roman numeral figure(s) for each chord.



Chord

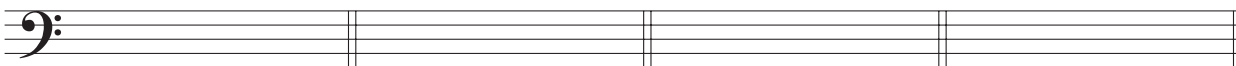
Name: \_\_\_\_\_

Key(s): \_\_\_\_\_

Roman numeral figure(s): \_\_\_\_\_

5. Write the following chords using key signatures, in whole notes.

- a) the dominant seventh with F as the third, in second inversion
- b) the diminished seventh of f<sup>-</sup>, in third inversion.
- c) the dominant seventh of G<sup>+</sup>, in first inversion
- d) the diminished seventh chord from J.S. Bach's St. Matthew Passion where the chorus answers a pivotal question with the text "Barrabam!"



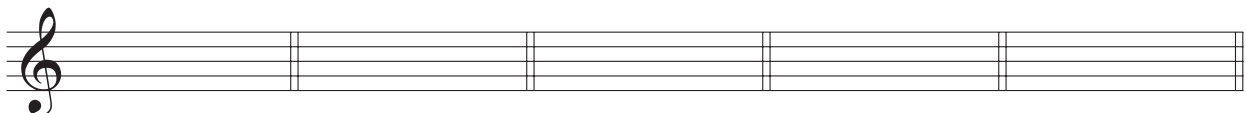
a)

b)

c)

d)

6. Using accidentals and whole notes, write the appropriate chord or triad given each of the following Roman numeral figures.



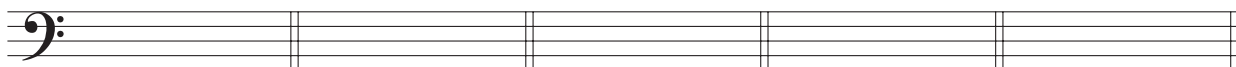
A<sup>b</sup> -: vi<sup>6</sup>

f<sup>#</sup> -: vii<sup>o3</sup><sup>4</sup>

C<sup>+</sup>: ii<sup>6</sup>

e<sup>b</sup> -: V<sup>4</sup><sup>6</sup>

E<sup>b</sup>+: V<sup>5</sup><sup>6</sup>



g<sup>#</sup> -: i<sup>6</sup>

g -: vii<sup>o7</sup>

e -: III<sup>+6</sup>

A+: IV<sup>4</sup><sup>6</sup>

d -: V<sup>2</sup><sup>4</sup>