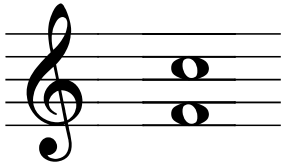
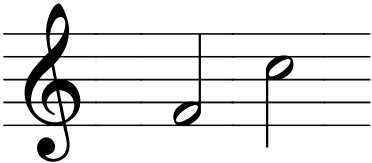



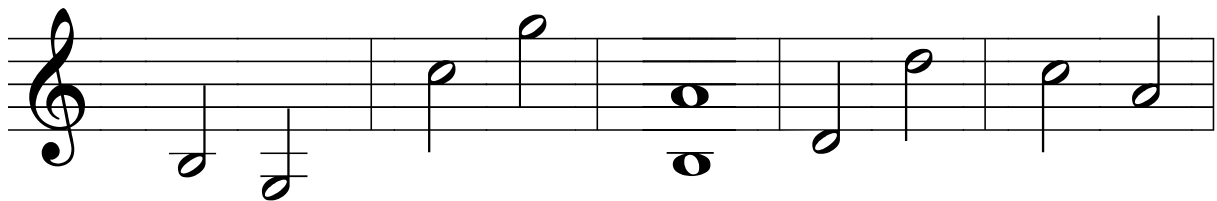
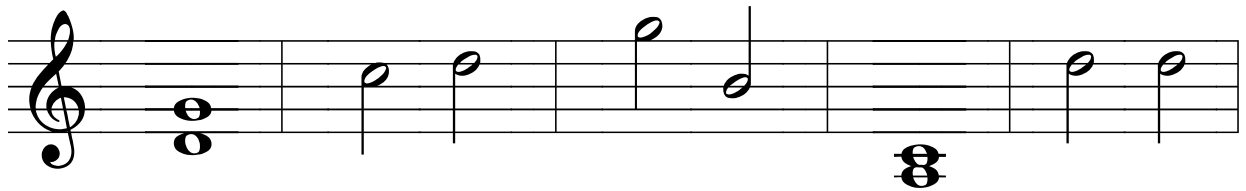
LESSON 17

Date: _____

HARMONIC INTERVAL	MELODIC INTERVAL	
	<i>ascending</i>	<i>descending</i>
		
notes played at the same time	notes played one after another	

PRACTICE

1. Determine the size of each of the following intervals.



2. Write the following intervals *above* each note to form ascending melodic intervals.

A musical staff in treble clef with seven notes: G4, B4, C5, D5, E5, F5, G5. Below the notes are the interval numbers: 3, 7, 8, 2, 5, 2, 10.

3. Write the following intervals *below* each note to form descending melodic intervals.

A musical staff in treble clef with seven notes: G4, B4, C5, D5, E5, F5, G5. Below the notes are the interval numbers: 1, 5, 3, 2, 6, 4, 11.

4. The RANGE of an instrument is the distance from the lowest note to the highest note. Determine the range of a piano.

A musical staff with a bass clef on the left and a treble clef on the right. Below the bass clef is an empty staff with a single note on the bottom line. Above the treble clef is an empty staff with a single note on the top line.