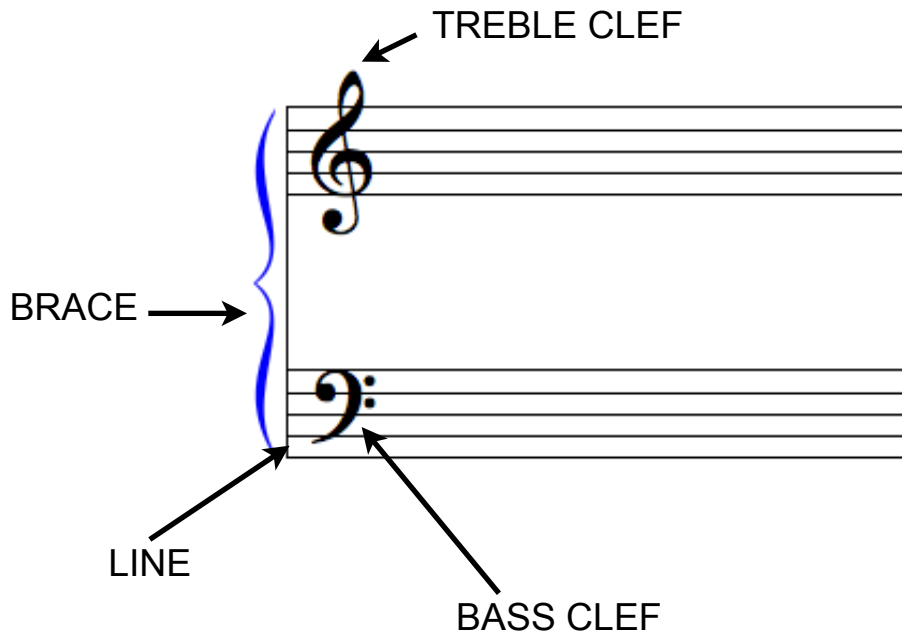


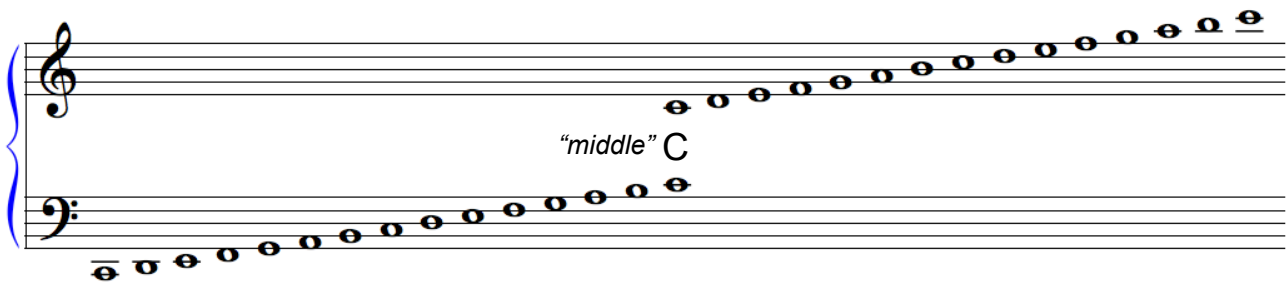
# LESSON 15

Date: \_\_\_\_\_

## THE GRAND STAFF



When notes are written on the grand staff, they are connected by “middle C”, which can be written on the treble and bass clef. Write the letter names under each of the following notes. Use CAPITAL letters.

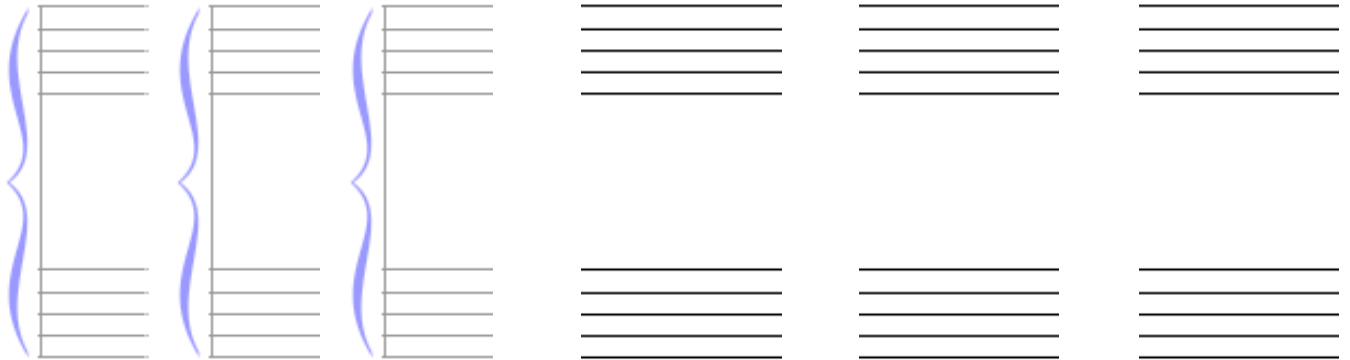


When notes rise from left to right, what will happen to the sound?

When notes rise from left to right by every line and space, what pattern do you notice in the letter names?

# PRACTICE

1. Trace these three braces and lines. Then, using the staves provided, draw the grand staff three times. Include the brace, line, treble clef, and bass clef.

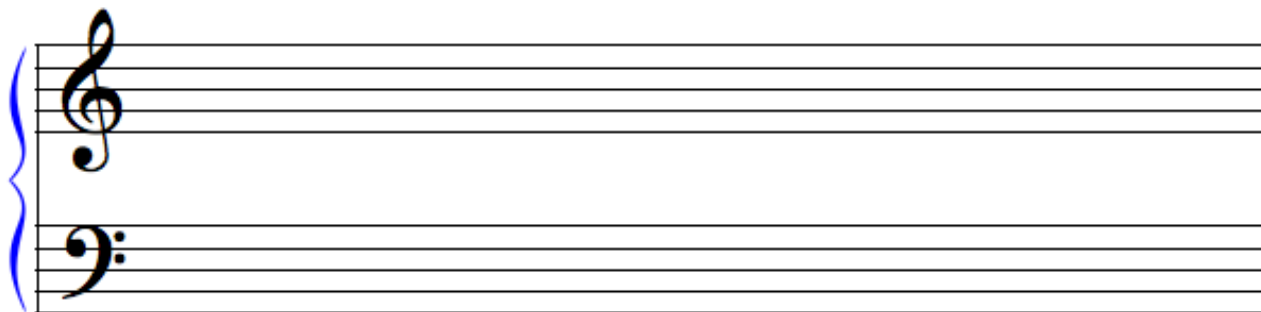


2. Write the indicated notes in *two* places. Add ledger lines where necessary.



C      B      F                      A      D      E

3. Write the indicated notes in *four* places on the grand staff. Add ledger lines where necessary.



G                      F                      A                      C