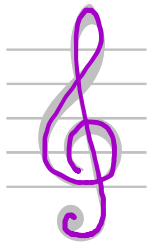


# LESSON 2

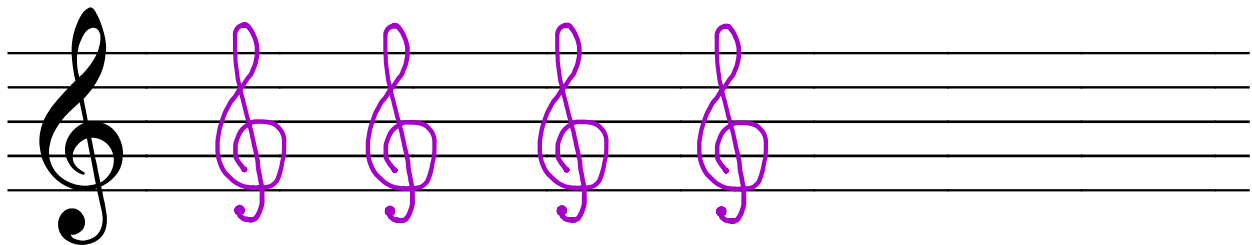
Date: \_\_\_\_\_

## The TREBLE CLEF

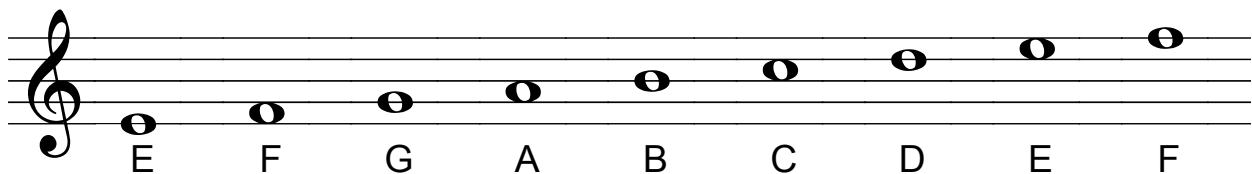
Practice drawing the treble clef  
by tracing over these 4 examples.



Draw 4 examples of the treble clef on the staff.



Each note on the treble clef is assigned a LETTER NAME.



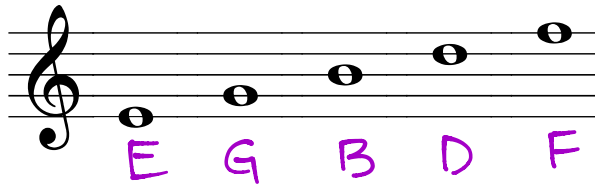
What patterns do you notice? *The letters are in alphabetical order.*

What letters does the musical alphabet use? A B C D E F G

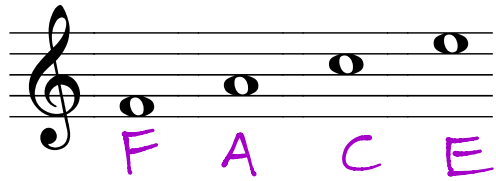
The treble clef is also called the "G" clef. How can this help you to remember all the letter names? *The treble clef swirls around the second line. This line is the letter G. Use the alphabet to determine the remaining lines and spaces.*

To memorize letter names, use the musical alphabet, or separate the notes by lines and spaces.

*Lines*



*Spaces*



## PRACTICE

Write the letter name under each of the following notes. Use CAPITAL letters.

