

LESSON 12

Date: _____

When analyzing triads within the context of keys, the scale degree of the root and the quality of the triad will help you determine all the keys in which a particular triad can be found. This is an useful skill as it will help you understand that the same triad has different harmonic functions in different keys.

In order to master this skill, the study of intervals built on the tonic of major and harmonic minor scales must be reviewed.

Name each of the following intervals.

Major Scales
(e.g. C+)

Minor Scales
(e.g. c-)

These intervals, combined with the following triad quality chart, will be useful as you extend your study of triads.

Triad Qualities	1	2	3	4	5	6	7
Major Scales:	+	-	-	+	+	-	o
Minor Scales:	-	o	x	-	+	+	o

Determine all the keys in which a d minor triad occurs.

Strategy:

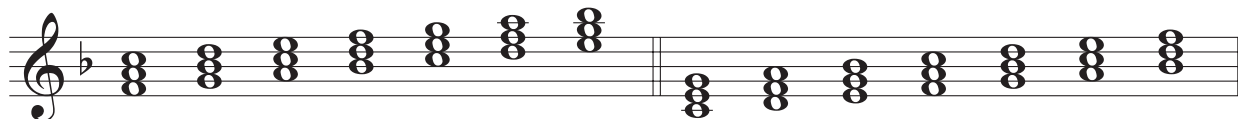
1. Rewrite (or spell) the triad in root position and determine its quality.
2. Isolate the root of the triad.
3. Using the triad qualities chart, list the scale degrees that match the quality of the triad for both major and minor scales.
4. Count down from the scale degree to determine the tonic, and thereby the key, in which the triad occurs. You may need to refer to the intervals analyzed above to ensure your tonic is correct.
5. It is possible that a triad of a given quality may not occur in a key, based on the root of the triad.

Determine all the keys in which a D \flat major triad occurs.

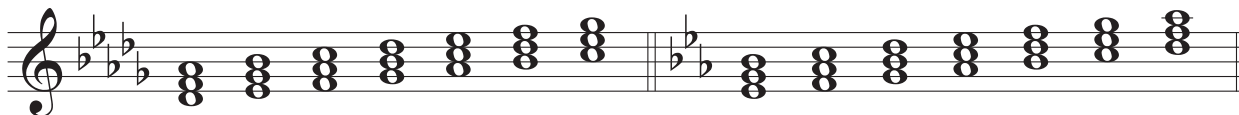
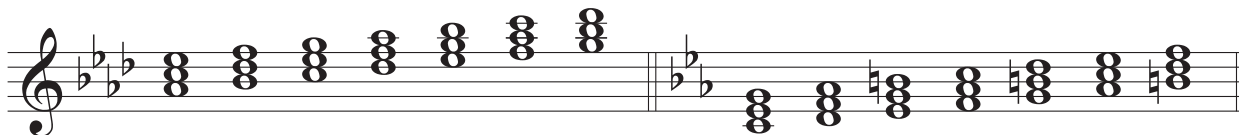
PRACTICE

1. Name the key of each scale, then circle the one triad that each of the keys have in common.

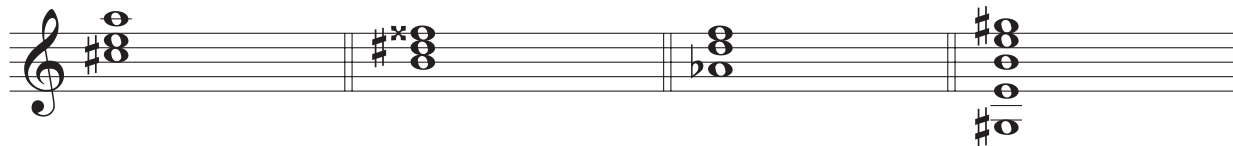
a)



b)

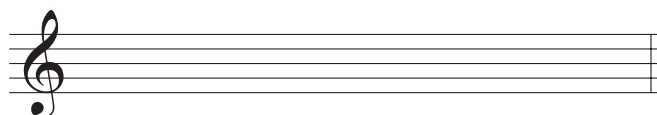


2. Determine all the keys in which each of the following triads occur.



3. What is the one triad that occurs only in the key of c# minor?

4. What is the only triad that occurs in C+, a -, and c -? [Hint: Write out the 7 triads for each scale using accidentals. Then analyze them and eliminate triads which are not shared between keys.]



5. Without writing out all the options, are there other methods of reasoning you can use to answer question #4?