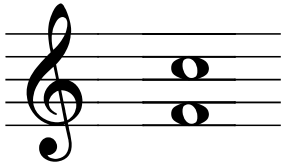
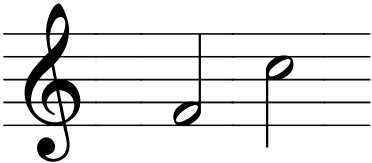



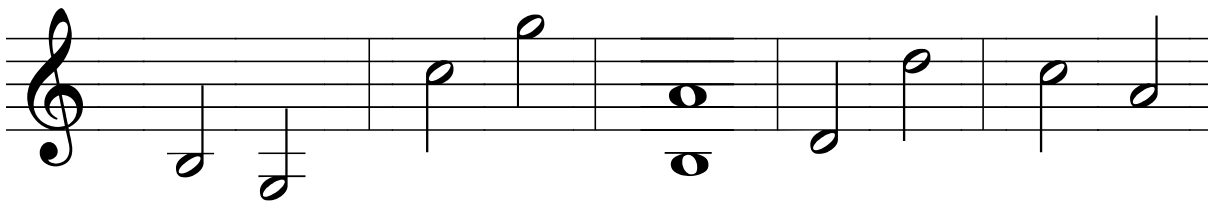
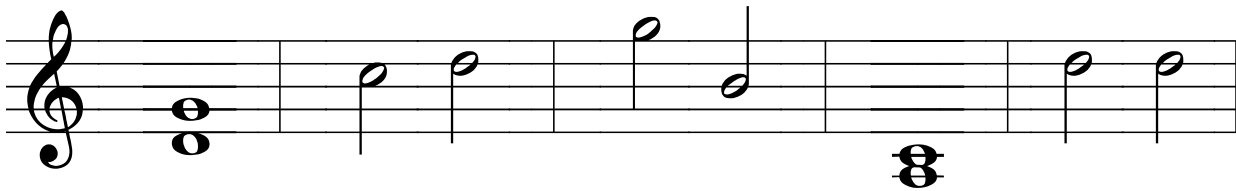
LESSON 21

Date: _____

HARMONIC INTERVAL	MELODIC INTERVAL	
	<i>ascending</i>	<i>descending</i>
		
notes played at the same time	notes played one after another	

PRACTICE

1. Determine the size of each of the following intervals.



2. Write the following intervals *above* each note to form ascending melodic intervals.

A musical staff in treble clef containing seven notes. Below each note is a number indicating the interval to be written above it. The notes and their corresponding interval numbers are: G4 (3), D5 (7), E5 (8), F5 (2), C5 (5), G4 (2), and D4 (10).

3. Write the following intervals *below* each note to form descending melodic intervals.

A musical staff in treble clef containing seven notes. Below each note is a number indicating the interval to be written below it. The notes and their corresponding interval numbers are: G4 (1), D5 (5), E5 (3), F5 (2), C5 (6), G4 (4), and D4 (11).

4. The **RANGE** of an instrument is the distance from the lowest note to the highest note. Determine the range of a guitar.

A musical staff in treble clef showing the range of a guitar. The lowest note is on the bottom line (E4) and the highest note is on the top line (E5). The range is an octave.