

# LESSON 17: REVIEW

Date: \_\_\_\_\_

1. Write the Roman numeral that represents each of the following triads.

IV<sup>6</sup>      V      i      IV<sup>6</sup>      V<sup>6</sup>

i<sup>4</sup>      V<sup>4</sup>      I<sup>6</sup>      V<sup>4</sup>      iv

2. For each Roman numeral indicated, name the key(s), the scale degree, the quality, and the position, then draw the triad.

	<u>i<sup>6</sup></u>	<u>iv<sup>6</sup></u>	<u>I<sup>6</sup></u>	<u>V<sup>6</sup></u>	<u>IV</u>
key:	<u>f#-</u>	<u>g-</u>	<u>A#+</u>	<u>D+</u>	<u>b-</u>
degree:	<u>T</u>	<u>SD</u>	<u>T</u>	<u>D</u>	<u>SD</u>
quality:	<u>-</u>	<u>-</u>	<u>+</u>	<u>+</u>	<u>+</u>
position:	<u>2nd</u>	<u>1st</u>	<u>1st</u>	<u>1st</u>	<u>R</u>

3. Determine the key of the following melodies.

Key: C+

Key: f-



4. Answer the questions based on the following musical excerpt.

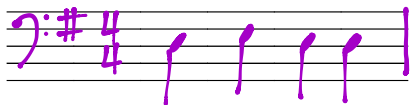
- a) Name the key of this excerpt. G+
- b) Reduce each chord to a triad in root position using the extra staff provided. Shade in the bass note on each triad.
- c) Use Roman numerals to symbolize each chord. You may omit the chords marked with asterisks.
- d) Consider the chord on beat 3 of bar 2:
- i) The bass of the chord is D.
  - ii) The root, third, and fifth of the chord are G B D, respectively.
  - iii) The chord is build on the tonic (I) scale degree.
  - iv) The quality of the chord is +.
  - v) The chord is in 2nd position.

5. Using the musical excerpt from #4, complete the transpositions. Include the time signature and key signature in each response.

a) Rewrite the tenor voice from bar 3 in the treble clef at the same pitch.



b) Transpose the alto voice in bar 2 down one octave in the bass clef.



c) Transpose the bass voice in bar 3 up one octave in the bass clef.



d) Transpose the soprano voice in bar 2 down one octave in the treble clef.



e) Transpose the tenor voice in bar 3 up one octave in the treble clef.

