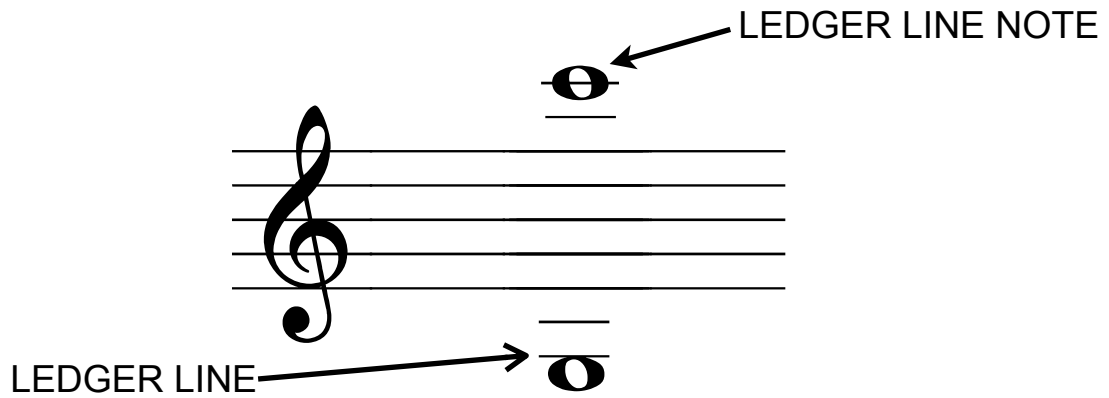
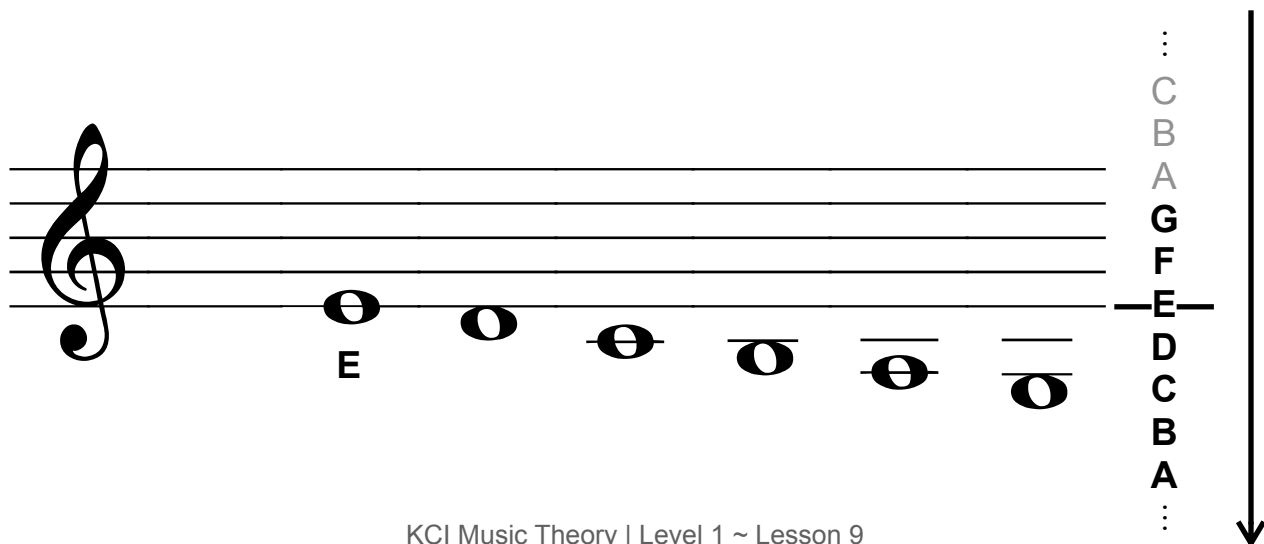
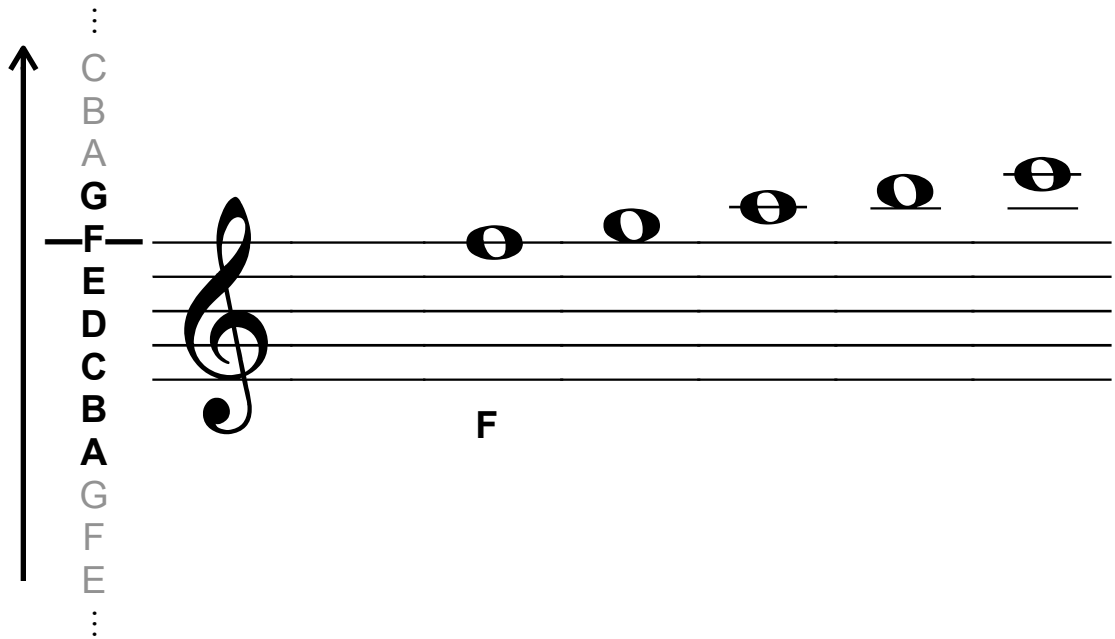


LESSON 9

Date: _____



Use the musical alphabet to help you determine the letter name of notes on LEDGER LINES.



PRACTICE

1. Write the letter name under each of the following notes. Use CAPITAL letters.

The first staff contains the following notes from left to right: a whole note on the 4th line (F4), a whole note on the 3rd space (E4), a whole note on the 2nd space (D4), a whole note on the 1st space (C4), a whole note on the 4th line (F4), and a whole note on the 5th line (G4). The second staff contains the following notes from left to right: a whole note on the 1st space (C4), a whole note on the 2nd space (D4), a whole note on the 3rd space (E4), a whole note on the 4th line (F4), a whole note on the 5th line (G4), and a whole note on the 4th space (B3).

2. The following notes show the RANGE (distance from lowest note to highest note) of a guitar. Determine the letter name of these two notes.

The diagram shows a treble clef staff with a whole note on the 4th line (F4) labeled "6th string open" and "lowest note". To the right, a vertical stack of six lines represents the strings of a guitar. The top line has a whole note on it labeled "1st string 20th fret" and "highest note".