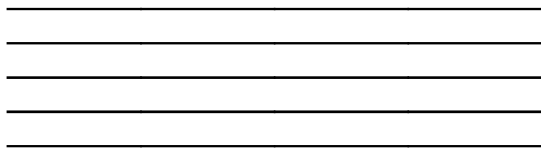


# LESSON 1

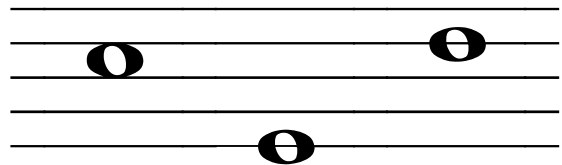
Date: \_\_\_\_\_

Music is written on a *staff*. *Notes* can be written on a *line* or a *space*. Each music note tells us two pieces of information: how high or low the sound is (*pitch*), and how long or short the sound lasts (*duration*).

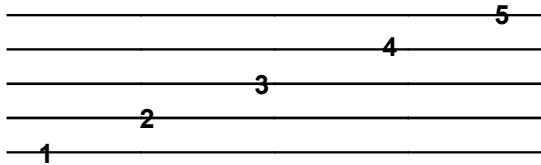
## The STAFF



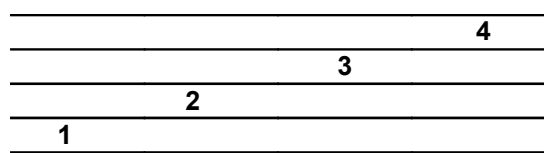
## NOTES



## LINES



## SPACES



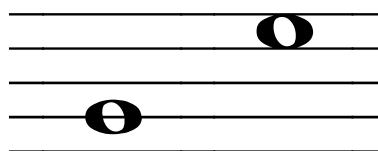
## PITCH

List a *low*-pitched musical sound.

- *tuba*

List a *low*-pitched non-musical sound.

- *fog horn*



*lower*      *higher*

List a *high*-pitched musical sound.

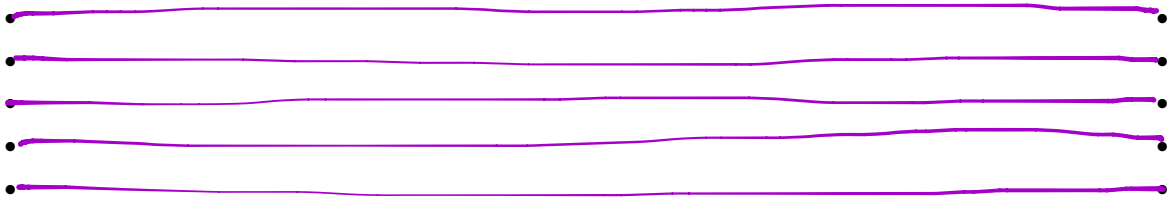
- *flute*

List a *high*-pitched non-musical sound.

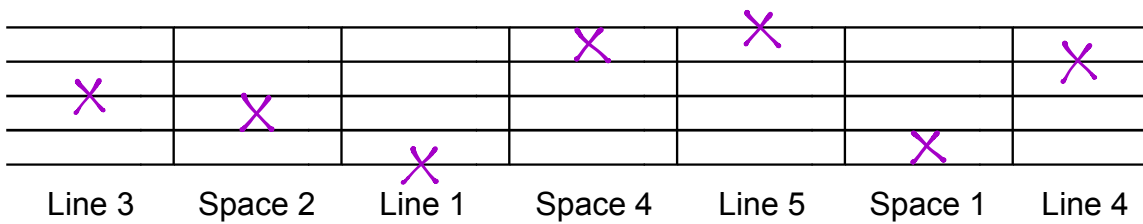
- *bird*

# PRACTICE

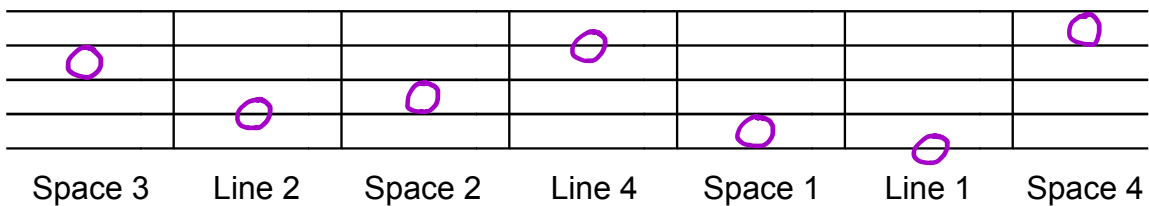
1. Draw a staff by connecting the dots. Use a ruler.



2. On the staff, mark an X in the indicated locations.



3. Draw notes like this  in the indicated locations.



4. Circle the *higher* note.

