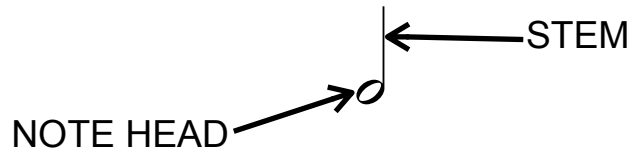


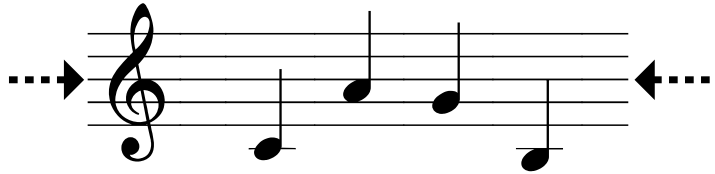
LESSON 14

Date: _____



THE STEM RULE

1. Notes *below* the third line:



UP/RIGHT



2. Notes *above* the third line:



DOWN/LEFT

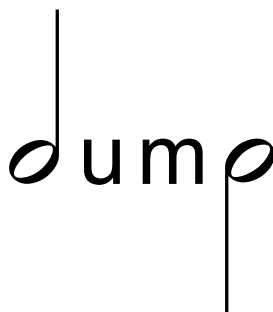


3. Notes *on* the third line:



UP or DOWN

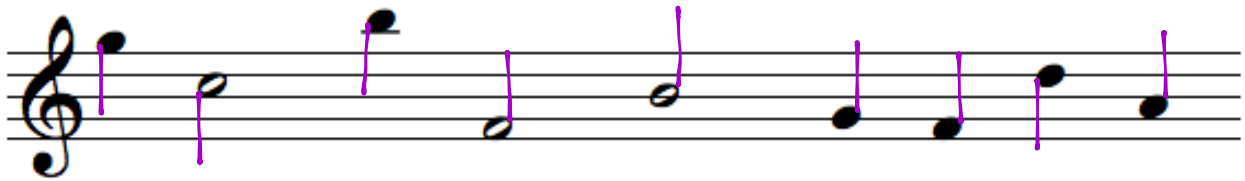
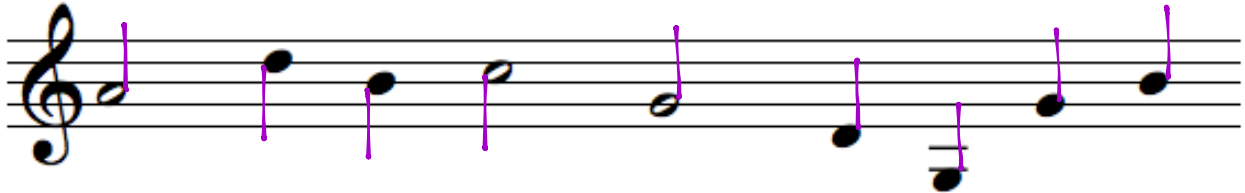
4. *Stem Length* = 3 spaces [or one octave or from note head to the next line or space with the same letter name.]



PRACTICE

1. Add stems to the following note heads. Remember the rules:

- a) up/right
- b) down/left
- c) length



2. Draw the treble clef and write the indicated notes.

A musical staff in treble clef with five notes. The first note is a whole note on the first line (C4), labeled 'C whole'. The second note is a quarter note on the second space (A4), labeled 'A quarter'. The third note is a half note on the second line (F4), labeled 'E half'. The fourth note is a whole note on the second space (A4), labeled 'F whole'. The fifth note is a quarter note on the second line (G4), labeled 'B quarter'.

3. Draw the bass clef and write the indicated notes.

A musical staff in bass clef with five notes. The first note is a quarter note on the second space (D3), labeled 'D quarter'. The second note is a half note on the second line (G2), labeled 'G half'. The third note is a half note on the second space (D3), labeled 'E half'. The fourth note is a whole note on the second space (D3), labeled 'A whole'. The fifth note is a quarter note on the second line (G2), labeled 'C quarter'.