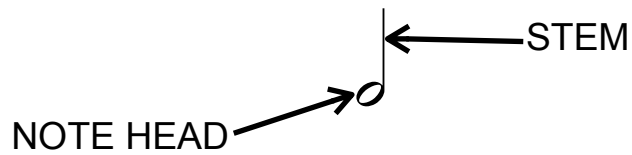


# LESSON 11

Date: \_\_\_\_\_



## THE STEM RULE

1. Notes *below* the third line:



UP/RIGHT



2. Notes *above* the third line:



DOWN/LEFT

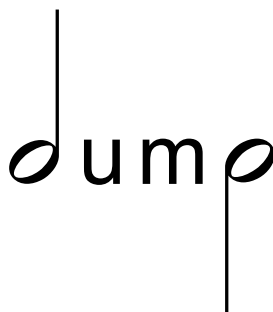


3. Notes *on* the third line:



UP or DOWN

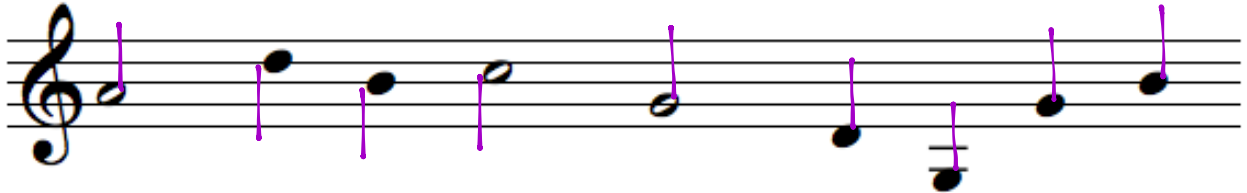
4. *Stem Length* = 3 spaces [or one octave or from note head to the next line or space with the same letter name.]



# PRACTICE

1. Add stems to the following note heads. Remember the rules:

- a) up/right
- b) down/left
- c) length



2. Draw the treble clef and write the indicated notes.

A musical staff in treble clef with five note heads. The notes are on the following lines and spaces: C4 (line 1), A4 (space 1), E4 (line 2), F4 (space 2), and B4 (line 3). Each note has a vertical stem. The stems for C4, A4, and E4 are on the left side of the note heads. The stems for F4 and B4 are on the right side of the note heads.

C whole      A quarter      E half      F whole      B quarter

3. Draw the bass clef and write the indicated notes.

A musical staff in bass clef with five note heads. The notes are on the following lines and spaces: D3 (line 1), G3 (space 1), E3 (line 2), A2 (space 2), and C3 (line 3). Each note has a vertical stem. The stems for D3, G3, and E3 are on the left side of the note heads. The stems for A2 and C3 are on the right side of the note heads.

D quarter      G half      E half      A whole      C quarter