

LESSON 13: REVIEW

Date: _____

1. Identify the following triads as major (+) or minor (-).

Treble Clef: - - + + -
 Bass Clef: + - + - -

2. Identify the following blocks of harmony as major (+) or minor (-).

+ - + - +

3. In major scales, the tonic, subdominant, and dominant triads are major.

In minor scales, the tonic and subdominant triads are minor.

In minor scales, the dominant triad is major.

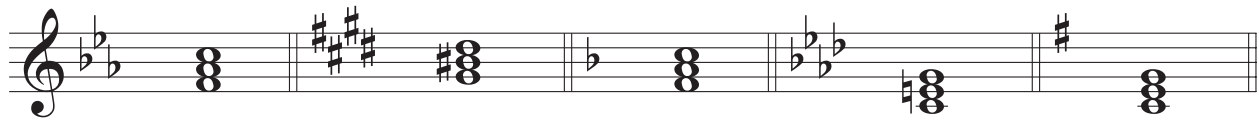
4. Draw the indicated solid triads [tonic (T), subdominant (SD), dominant (D)], in root position, using key signatures.

Treble Clef: G+: SD B \flat +: T A+: D c-: D
 Bass Clef: d-: SD b-: T c \sharp -: D E+: SD

5. Determine the key, degree (T/SD/D), and quality (+/-) of each of the following triads.

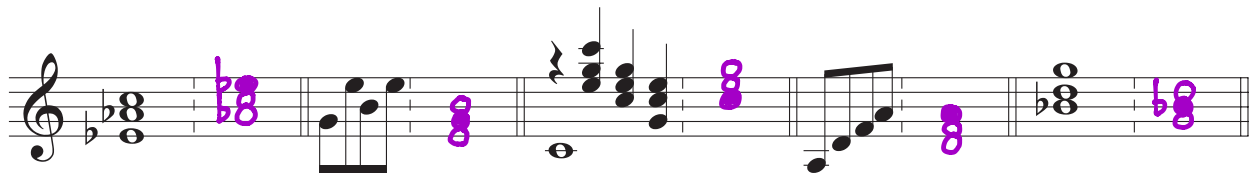


key:	<u>B^b-</u>	<u>A^b+</u>	<u>E+</u>	<u>F#-</u>	<u>B^b+</u>
degree:	<u>T</u>	<u>SD</u>	<u>D</u>	<u>D</u>	<u>SD</u>
quality:	<u>-</u>	<u>+</u>	<u>+</u>	<u>+</u>	<u>+</u>



key:	<u>C-</u>	<u>C#-</u>	<u>F+</u>	<u>f-</u>	<u>G+</u>
degree:	<u>SD</u>	<u>D</u>	<u>T</u>	<u>D</u>	<u>SD</u>
quality:	<u>-</u>	<u>+</u>	<u>+</u>	<u>+</u>	<u>+</u>

6. Reduce each block of harmony to a root position triad, then identify the bass note of the given triad, the root, third, and fifth, the quality (+/-), and the position (R/1st/2nd).



bass:	<u>E^b</u>	<u>G</u>	<u>C</u>	<u>A</u>	<u>B^b</u>
fifth:	<u>E^b</u>	<u>B</u>	<u>G</u>	<u>A</u>	<u>D</u>
third:	<u>C</u>	<u>G</u>	<u>E</u>	<u>F</u>	<u>B^b</u>
root:	<u>A^b</u>	<u>E</u>	<u>C</u>	<u>D</u>	<u>G</u>
quality:	<u>+</u>	<u>-</u>	<u>+</u>	<u>-</u>	<u>-</u>
position:	<u>2nd</u>	<u>1st</u>	<u>R</u>	<u>2nd</u>	<u>1st</u>