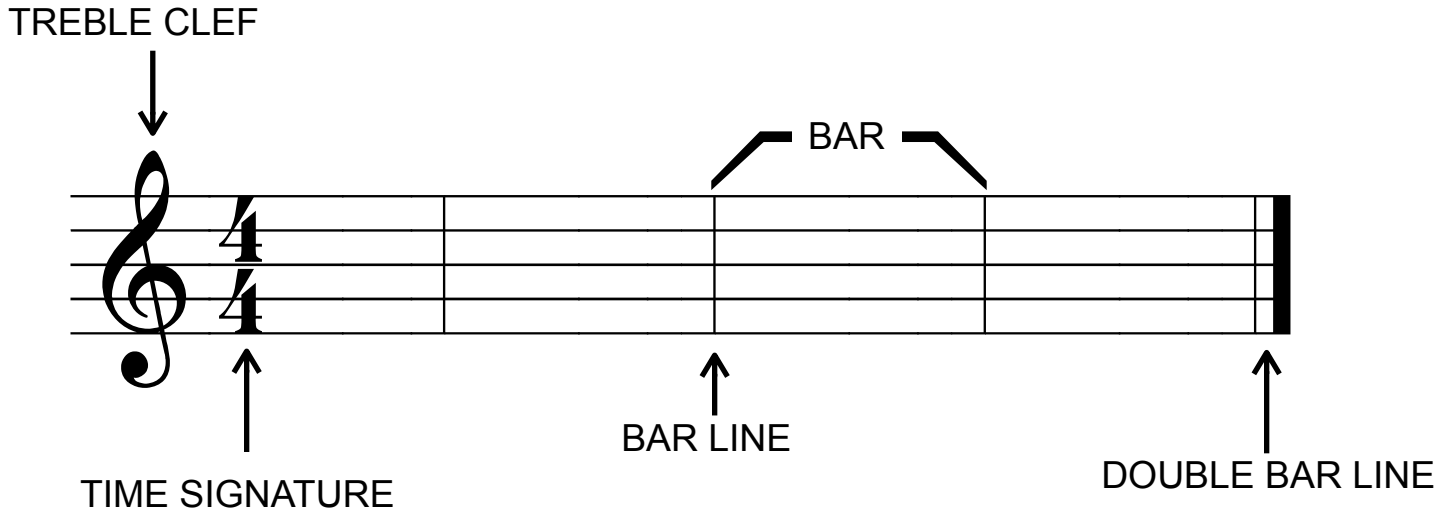


LESSON 3

Date: _____

Music is organized into BEATS. Beats are the steady pulse of music. Beats are grouped into BARS. TIME SIGNATURES tell us how many beats are in a bar.

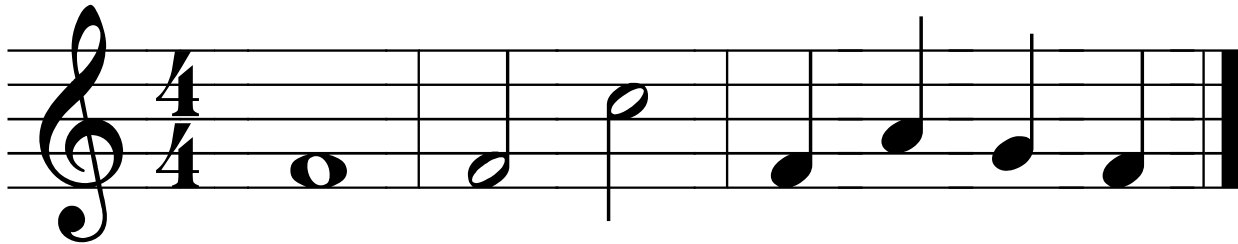


Each music note tells us two pieces of information: how high or low the sound is (*pitch*), and how long or short the sound lasts (*duration*).

○ WHOLE NOTE = 4 BEATS

◐ HALF NOTE = 2 BEATS

◑ QUARTER NOTE = 1 BEAT



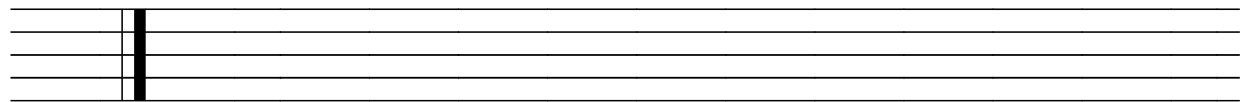
PRACTICE

Draw 5 more sets of each of the following musical symbols.

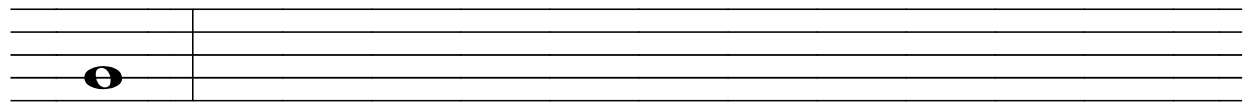
Treble Clef and Time Signature



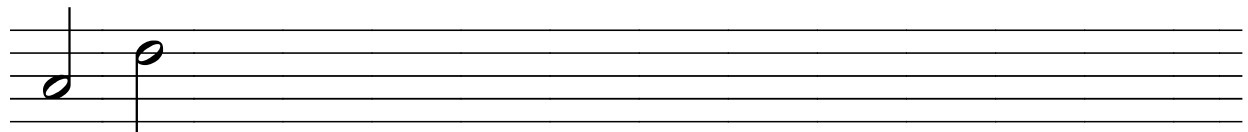
Double Bar Line



Whole Note and Bar Line



Half Notes



Quarter Notes

