

LESSON 5: REVIEW

Date: _____

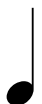
1. Match-up

Fill in each blank with the correct number. Use each number only once.



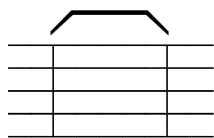


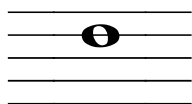


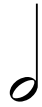


beat

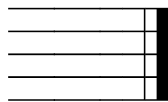
ABCDEFG

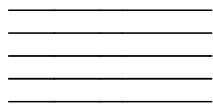


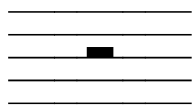




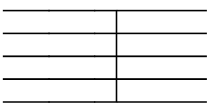


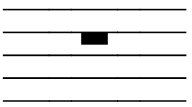






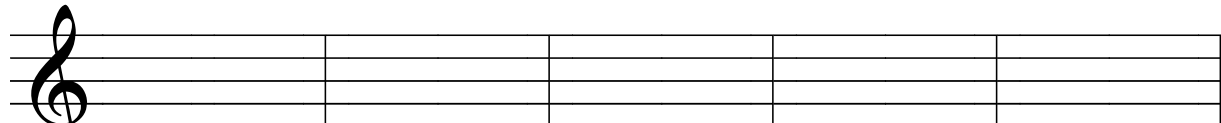




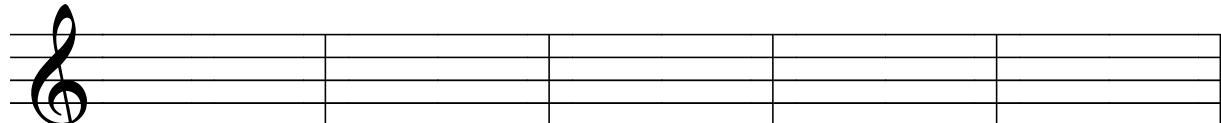


1. the staff
2. note on the 4th line
3. note on the 2nd space
4. treble clef
5. musical alphabet
6. steady pulse
7. bar
8. time signature
9. bar line
10. double bar line
11. whole note
12. half note
13. quarter note
14. whole rest
15. half rest
16. quarter rest

2. Draw whole notes in the following locations.

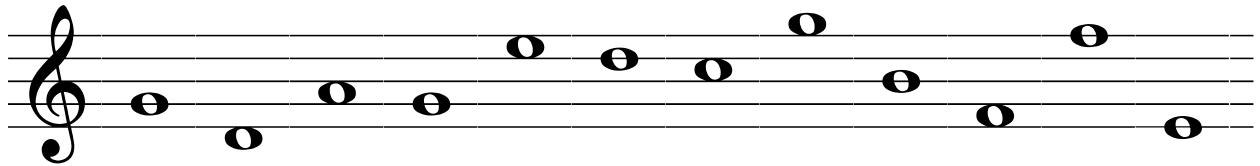


A musical staff with a treble clef, divided into five equal-width empty boxes. Below each box is a label: "Line 4", "Space 2", "Space 1", "Line 5", and "Line 3".



A musical staff with a treble clef, divided into five equal-width empty boxes. Below each box is a letter name: "E", "D", "B", "A", and "G".

3. Write the letter name under each of the following notes. Use CAPITAL letters.

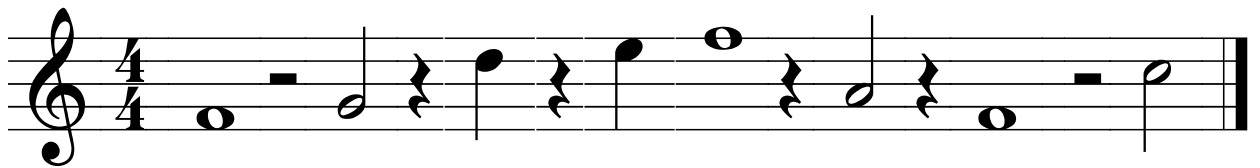


A musical staff with a treble clef containing ten scattered whole notes. The notes are located at various positions on the staff: one on the first line, one in the first space, one on the second line, one in the second space, one on the third line, one in the third space, one on the fourth line, one in the fourth space, one on the fifth line, and one in the space below the staff.

4. Add bar lines to the following music.



A musical staff with a treble clef and a 4/4 time signature. The staff contains a sequence of notes and rests: a quarter rest, a quarter note, a half note, a quarter note, a half rest, a quarter note, a half note, a half rest, a quarter note, a quarter rest, a quarter note, and a half rest.



A musical staff with a treble clef and a 4/4 time signature. The staff contains a sequence of notes and rests: a half note, a half rest, a quarter note, a quarter rest, a half note, a quarter rest, a half note, a quarter rest, a quarter note, a quarter rest, a half note, and a half rest.

5. What line are whole rests attached to? _____

6. What line are half rests attached to? _____