

LESSON 7

Date: _____

~~ABCDEF~~G

~~BAR~~

~~BARLINE~~

~~BEAT~~

~~DOUBLEBARLINE~~

~~HALFNOTE~~

~~HALFREST~~

~~LINE~~

~~MUSIC~~

~~NOTES~~

~~PITCH~~

~~QUARTERNOTE~~

~~QUARTERREST~~

~~RESTS~~

~~SPACE~~

~~STAFF~~

~~TIMESIGNATURE~~

~~TREBLECLEF~~

~~WHOLENOTE~~

~~WHOLEREST~~

T D T W G E T P R V Q T B
I O S H F E A I E R U S A
M U E O E Y E T S G A E R
E B R L D T B C T T R R L
S L R E C F O H S R T F I
I E E R B F R N O E E L N
G B T E A A O O E B R A E
N A R S B T D C L L N H G
A R A T E S A I I E O R L
T L U S D P E S N C T H E
U I Q R S V E S E L E F W
R N H A L F N O T E U D G
E E C I S U M E A F L S O

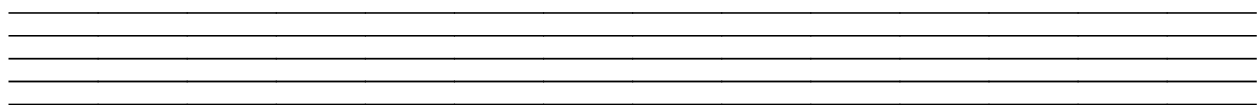
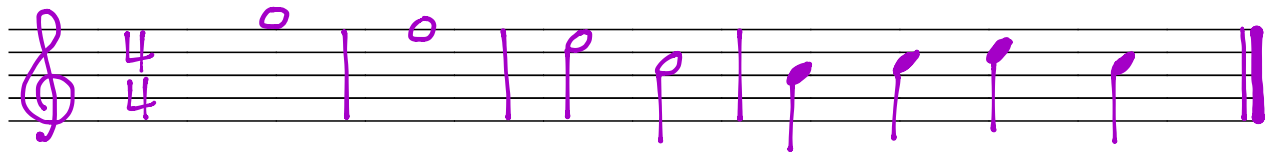
Copy the remaining letters in the spaces provided to reveal a hidden message.

EVERY GOOD GIRL
DESERVES FUDGE ALSO.

PRACTICE

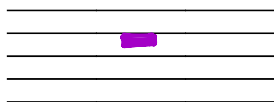
1. Draw each of the following musical symbols, in the given order, to create a musical composition that you will be able to play on the guitar.

- a) treble clef
- b) time signature
- c) notes [in the order of your choice]
 - two whole notes*
 - first string, third fret
 - first string, first fret
 - two half notes*
 - first string, open
 - second string, first fret
 - four quarter notes*
 - any pitches that you can play using strings 1 and 2
- d) bar lines
- e) double bar line

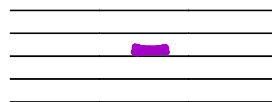


2. Draw each of the following musical symbols on the staves provided.

a) whole rest



b) half rest



c) quarter rest

