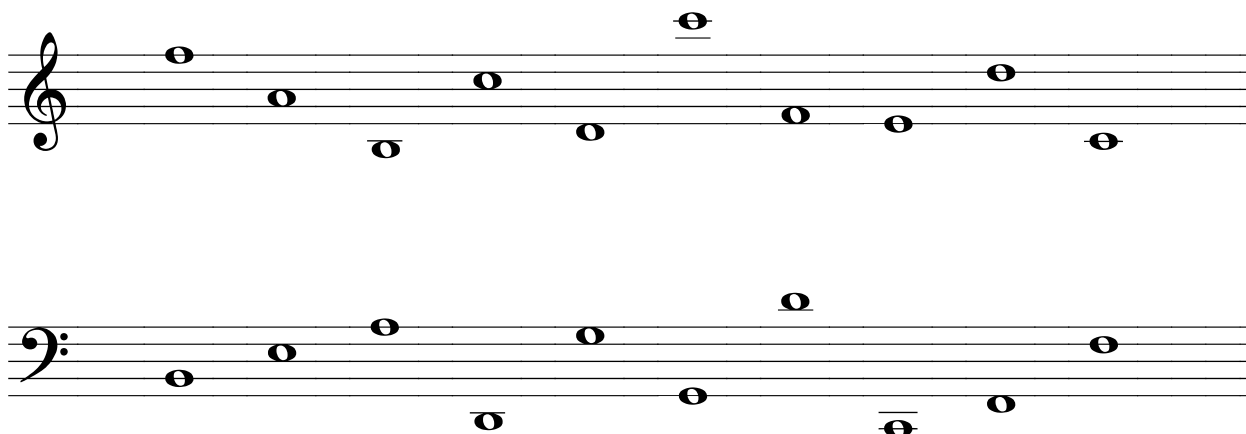


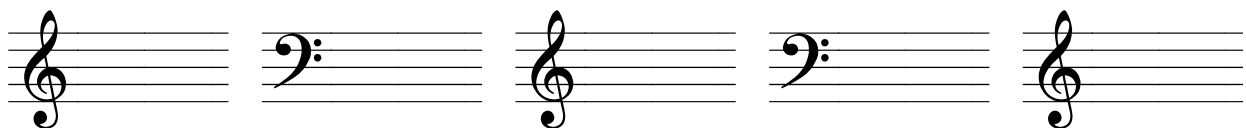
# LESSON 5: REVIEW

Date: \_\_\_\_\_

1. Write the letter name under each of the following notes. Use CAPITAL letters.



2. On the staff below, draw the required note given each of the following descriptions. Be sure to use the stem rule.



a) G quarter note


b) E half note

c) D whole note

d) F eighth note

e) G half note (using ledger lines)

3. Complete the following chart.

Note/Rest	Name	No. of Beats
		
		1 beat (silence)
		3 beats (sound)
	sixteenth note	

4. Complete each of the following musical equations by filling in the blank with a number.

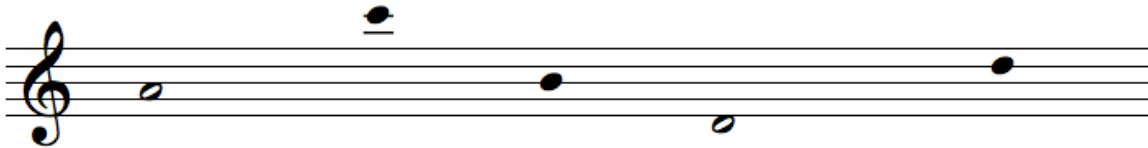
a) \_\_\_\_\_ ♪ = 1 ○.

b) \_\_\_\_\_ ♪ = 2 ♪.

c) \_\_\_\_\_ ♪ = 2 ♪.

d) \_\_\_\_\_ ♪ = 4 ♪.

5. Add stems to the following note heads.



6. Rewrite the following melodies, grouping and beaming the notes correctly.

