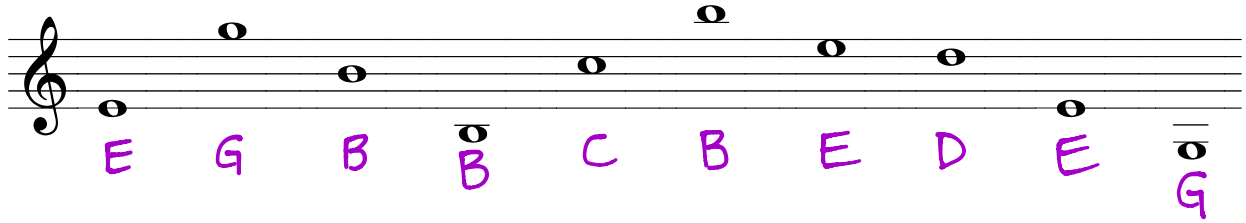


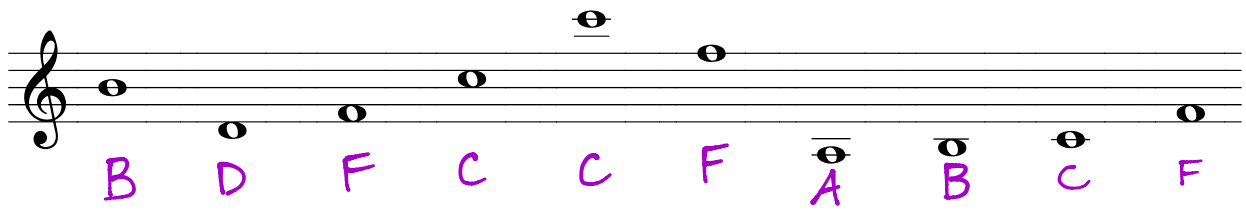
LESSON 10: REVIEW

Date: _____

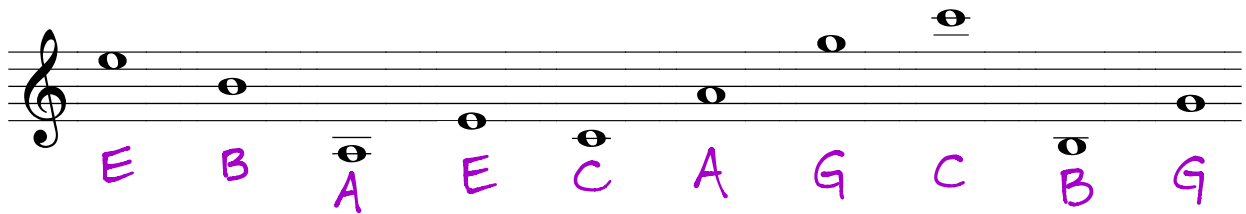
1. Write the letter name under each of the following notes. Use CAPITAL letters.



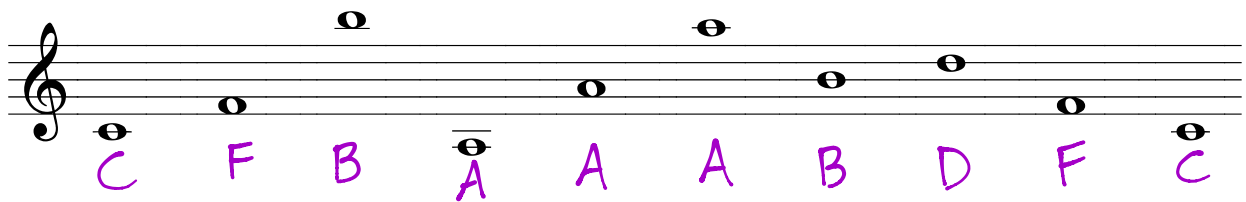
A musical staff with a treble clef. Ten notes are placed on the staff. Below each note is a handwritten capital letter name in purple ink. The notes and their corresponding letter names are: E (first space), G (second space), B (third space), B (third space with a flat sign), C (third space), B (third space), E (second space), D (second space), E (first space), and G (below the staff).



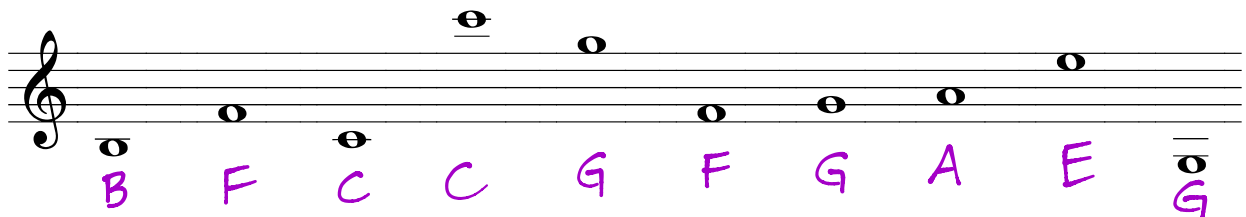
A musical staff with a treble clef. Ten notes are placed on the staff. Below each note is a handwritten capital letter name in purple ink. The notes and their corresponding letter names are: B (below the staff), D (below the staff), F (below the staff), C (below the staff), C (below the staff), F (below the staff), A (below the staff with a flat sign), B (below the staff), C (below the staff), and F (below the staff).



A musical staff with a treble clef. Ten notes are placed on the staff. Below each note is a handwritten capital letter name in purple ink. The notes and their corresponding letter names are: E (first space), B (second space), A (below the staff with a flat sign), E (first space), C (below the staff), A (below the staff), G (below the staff), C (below the staff), B (below the staff), and G (below the staff).



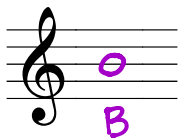
A musical staff with a treble clef. Ten notes are placed on the staff. Below each note is a handwritten capital letter name in purple ink. The notes and their corresponding letter names are: C (below the staff), F (below the staff), B (below the staff), A (below the staff with a flat sign), A (below the staff), A (below the staff), B (below the staff), D (below the staff), F (below the staff), and C (below the staff).



A musical staff with a treble clef. Ten notes are placed on the staff. Below each note is a handwritten capital letter name in purple ink. The notes and their corresponding letter names are: B (below the staff), F (below the staff), C (below the staff), C (below the staff), G (below the staff), F (below the staff), G (below the staff), A (below the staff), E (below the staff), and G (below the staff).

2. From the notes you have learned to play on your guitar, draw whole notes on the staff for each of the following fingerings. Write the letter under each whole note.

a) 2/0



b) 2/1



c) 2/3



d) 1/0



e) 1/1



f) 1/3

