

LESSON 13: REVIEW

Date: _____

1. Identify the following triads as major (+) or minor (-).





2. Identify the following blocks of harmony as major (+) or minor (-).

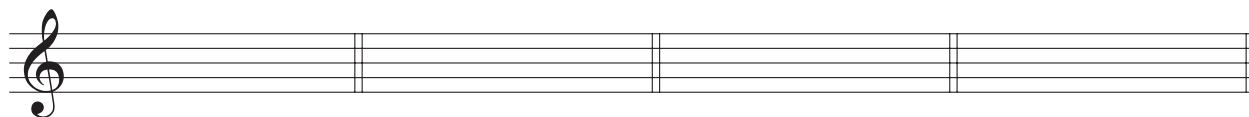


3. In major scales, the tonic, subdominant, and dominant triads are _____.

In minor scales, the tonic and subdominant triads are _____.

In minor scales, the dominant triad is _____.

4. Draw the indicated solid triads [tonic (T), subdominant (SD), dominant (D)], in root position, using key signatures.

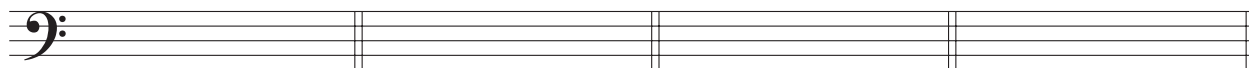


G+: SD

Bb+: T

A+: D

c-: D



d-: SD

b-: T

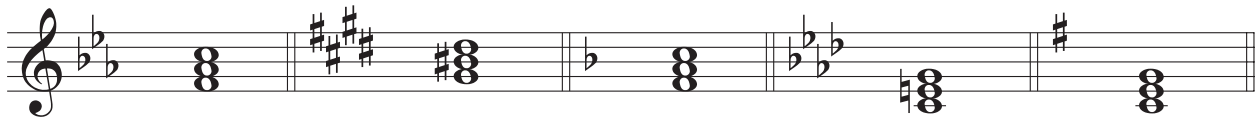
c# -: D

E+: SD

5. Determine the key, degree (T/SD/D), and quality (+/-) of each of the following triads.

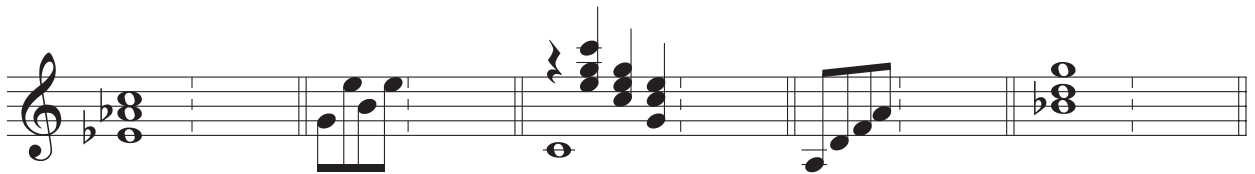


key: _____
 degree: _____
 quality: _____



key: _____
 degree: _____
 quality: _____

6. Reduce each block of harmony to a root position triad, then identify the bass note of the given triad, the root, third, and fifth, the quality (+/-), and the position (R/1st/2nd).



bass: _____
 fifth: _____
 third: _____
 root: _____
 quality: _____
 position: _____