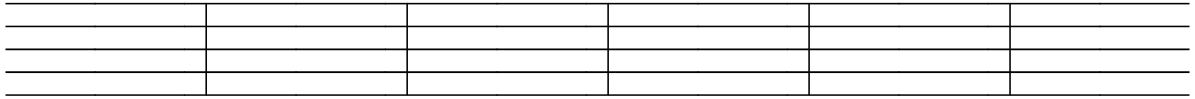


LEVEL 1 REVIEW

Date: _____

1. On the staff, mark an X in the following locations.



line 5

space 3

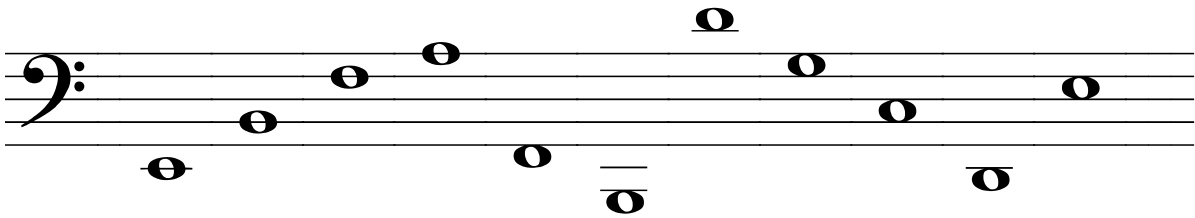
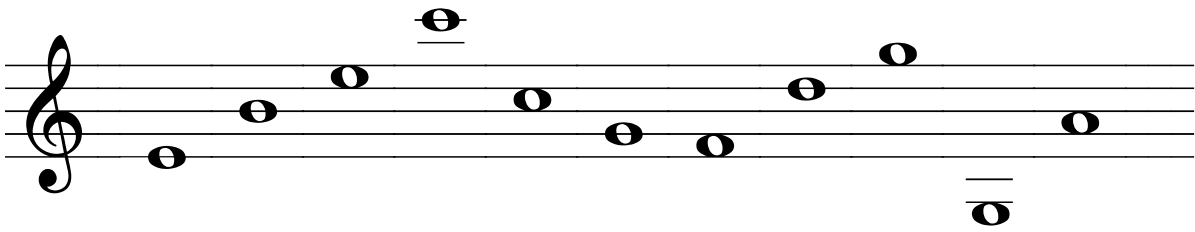
space 1

line 3

line 1

two ledger lines
above the staff

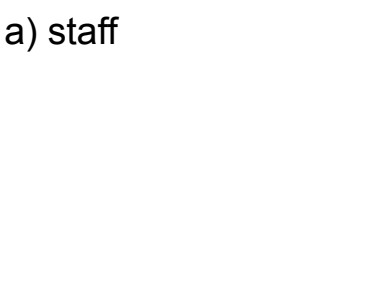
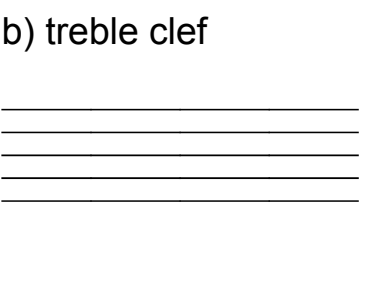
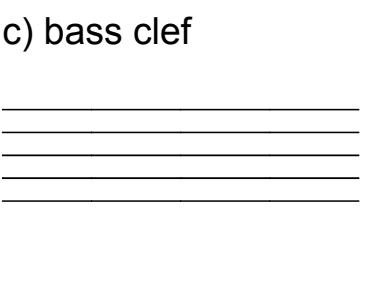
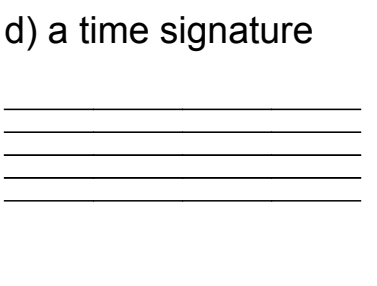
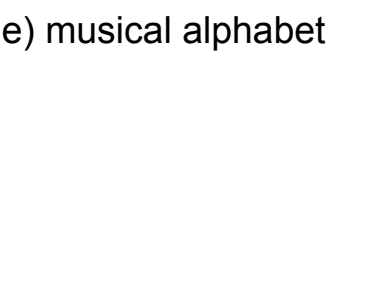
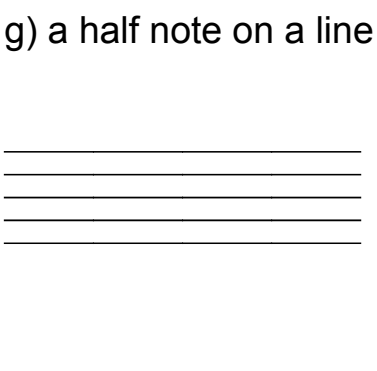
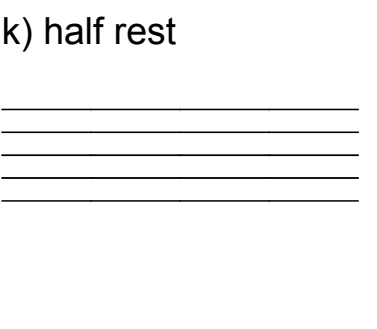
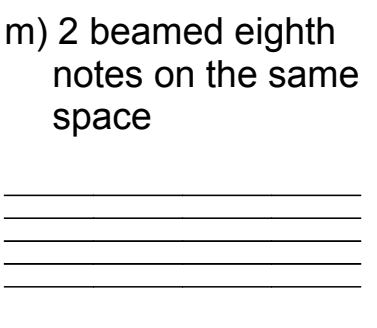
2. Write the letter name under each of the following notes. Use CAPITAL letters.



3. Add stems to each of the following note heads.



4. In the space provided, draw the musical symbol that represents the given concept.

| | | |
|---|--|---|
| <p>a) staff</p>  | <p>b) treble clef</p>  | <p>c) bass clef</p>  |
| <p>d) a time signature</p>  | <p>e) musical alphabet</p>  | <p>f) bar line</p>  |
| <p>g) a half note on a line</p>  | <p>h) quarter note on a line</p>  | <p>i) a single eighth note on a line</p>  |
| <p>j) whole rest</p>  | <p>k) half rest</p>  | <p>l) quarter rest</p>  |
| <p>m) 2 beamed eighth notes on the same space</p>  | <p>n) 4 beamed sixteenth notes on the same line</p>  | <p>o) double bar line</p>  |

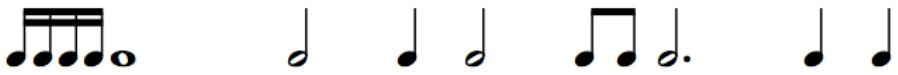
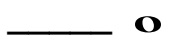
5. Add bar lines to each of the following musical excerpts.



6. Add a time signatures to each of the following musical excerpts.

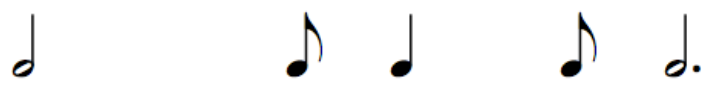



7. Fill in the blank with the correct number.

a)  = ___ 

b)  = ___ 

c)  = ___ 

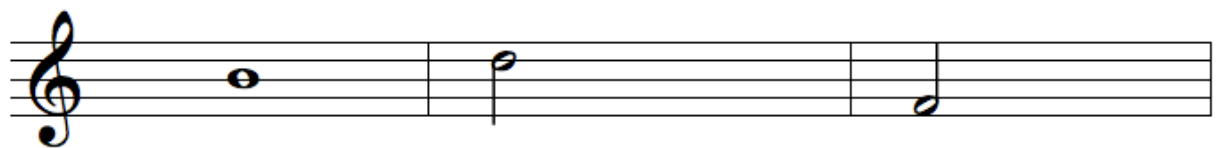
d)  = ___ 

e)  = ___ 

8. Determine the size of each of the following intervals.



9. Write the required interval.

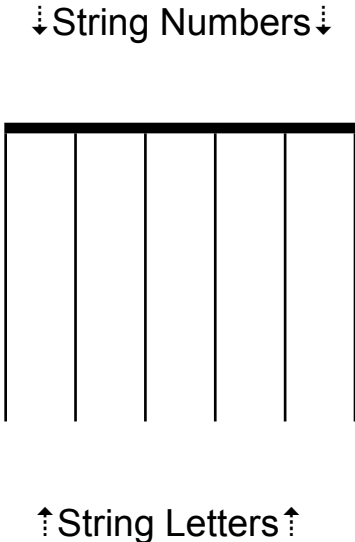


6
harmonic interval

4
descending melodic
interval

7
ascending melodic
interval

10. Complete the diagram by adding the open string letters and open string numbers.

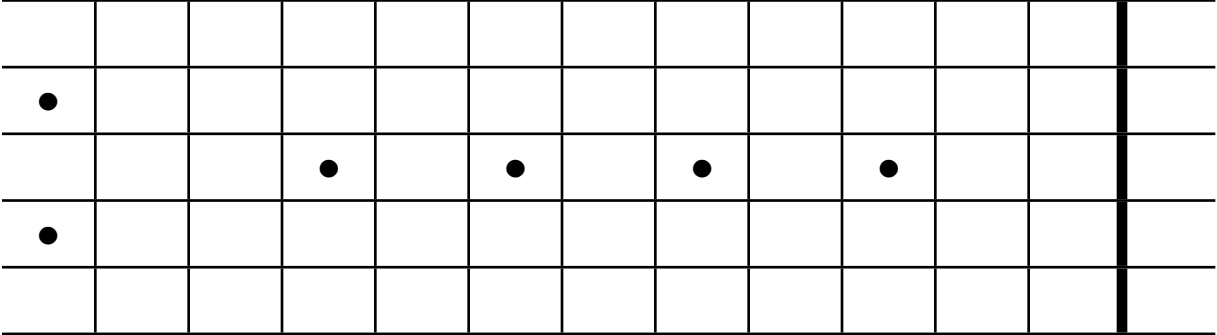


11. Write the notes that correspond to the six open strings of the guitar.

1st 2nd 3rd 4th 5th 6th

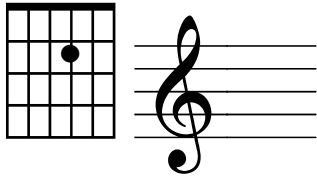
12. Label the guitar fret board with all the natural letter names up to the 12th fret.

Recall: B/C and E/F are *semitones* and are always one fret apart. All other letters are *tones* and are two frets apart.

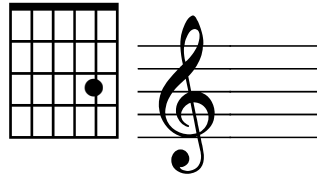


13. Write the note that corresponds to each guitar fingering.

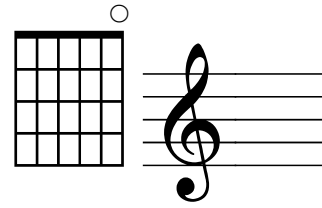
a)



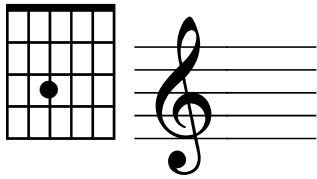
b)



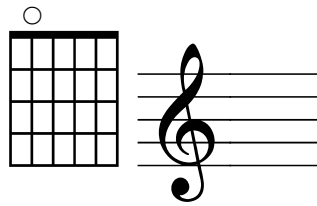
c)



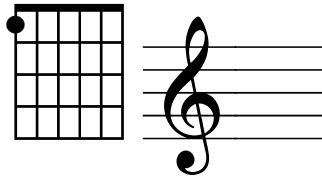
d)



e)

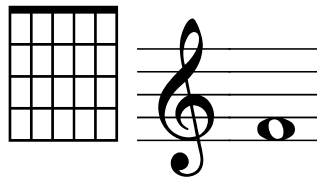


f)

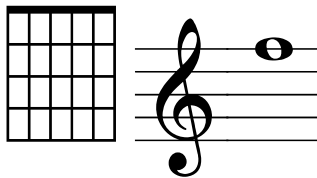


14. Complete one possible guitar fingering chart for each of the given notes.

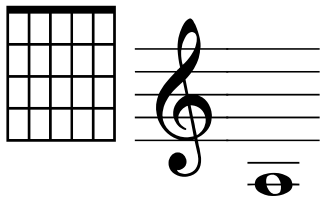
a)



b)



c)



Preparing for your Level 1 Final:

- Ensure all the work for the 25 Lessons is complete and any required corrections have been made. Review each lesson to ensure you have mastered the concepts.
- Ensure all 4 quizzes have been corrected. Redo each quiz on a separate piece of paper to practice for the final.
- Ensure the Level 1 Review has been completed and all necessary corrections have been made.
- Congratulations on completing Level 1! Good luck with your Final.