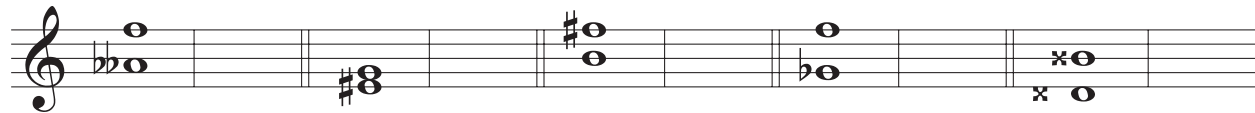


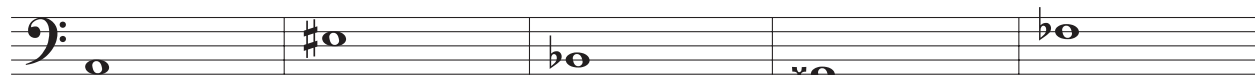
LESSON 10: REVIEW

Date: _____

1. Name the following intervals. Invert them and name the inversions.



2. Write the following intervals above the given notes.



-6 +7 o5 -3 x4

3. Write the following intervals below the given notes.



-6 +7 o5 -3 x4

4. Rewrite the given note in the given clef, meeting the following conditions.

	at the same pitch	one octave lower	one octave higher

5. Name the key that is the result of each of the following transpositions.

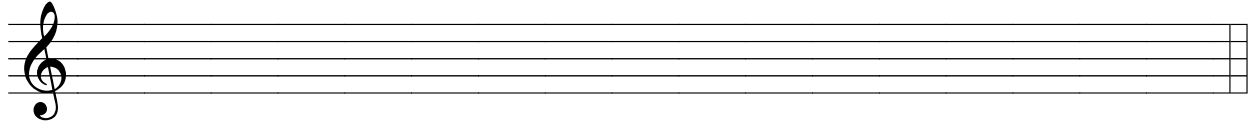
- | | | | |
|---------------------------|-------|-------------------|-------|
| a) A+; up a P5 | _____ | e) c-; up a -6 | _____ |
| b) D \flat +; down a -3 | _____ | f) c#-; down a P4 | _____ |
| c) f#-; up a -3 | _____ | g) A+; up a +6 | _____ |
| d) F+; down a -7 | _____ | h) b-; down an x2 | _____ |

6. Transpose the following melodies as indicated.

a) key: _____



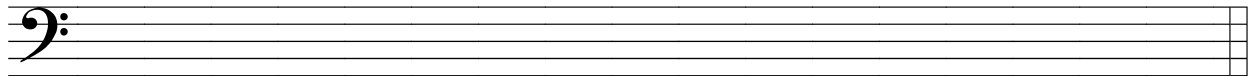
to the key of C+



b) key: _____



up a $\circ 4$



7. Complete the following chart so when all required instruments play simultaneously they sound in unison or at the octave. Transpose each note such that it falls within the playable range of the required instrument.

Flute "C"	Trumpet "B \flat "	Alto Saxophone "E \flat "	French Horn "F"

8. Transpose the SATB lines of the following musical passage for clarinet, alto saxophone, french horn and trombone respectively.

A musical score for SATB voices in 4/4 time, key of B-flat major. The score consists of four staves: Soprano (S), Alto (A), Tenor (T), and Bass (B). The melody is primarily in the soprano and alto parts, with the tenor and bass parts providing harmonic support. The piece concludes with a final chord in the soprano and alto parts.

Four empty musical staves for instrument transposition, labeled on the left as Cl. (Clarinet), A. Sax (Alto Saxophone), F. Hn. (French Horn), and Tbn. (Trombone). Each staff begins with its respective clef: Cl. (treble clef), A. Sax (treble clef), F. Hn. (treble clef), and Tbn. (bass clef). The staves are divided into four measures, corresponding to the four measures of the SATB score above.