

LESSON 6

Date: _____

~~A~~~~B~~~~C~~~~D~~~~E~~~~F~~~~G~~

~~B~~AR

~~B~~ARLINE

~~B~~EAT

~~D~~OUBLEBARLINE

~~H~~ALFNOTE

~~H~~ALFREST

~~L~~INE

~~M~~USIC

~~N~~OTES

~~P~~ITCH

~~Q~~UARTERNOTE

~~Q~~UARTERREST

~~R~~ESTS

~~S~~PACE

~~S~~TAFF

~~T~~IMESIGNATURE

~~T~~REBLECLEF

~~W~~HOLENOTE

~~W~~HOLERREST

T D T W G E T P R V Q T B
I O S H F E A I E R U S A
M U E O E Y E T S G A E R
E B R L D T B C T T R R L
S L R E C F O H S R T F I
I E E R B F B N O E E L N
G B T E A A O O E B R A E
N A R S R T D C L L N H G
A R A T E S A I I E O R L
T L U S D P E S N C T H E
U I Q R S V E S E L E F W
R N H A L F N O T E U D G
E E C I S U M E A F L S O

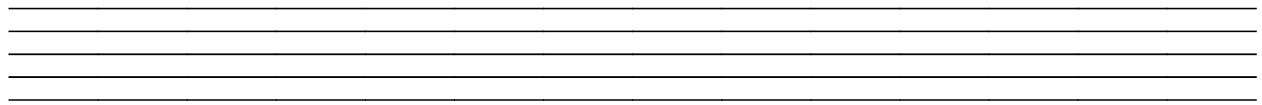
Copy the remaining letters in the spaces provided to reveal a hidden message.

EVERY GOOD GIRL
DESERVES FUDGE ALSO.

PRACTICE

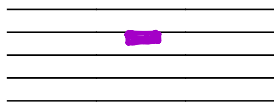
1. Draw each of the following musical symbols, in the given order, to create a musical composition.

- a) treble clef
- b) time signature
- c) notes [in the order of your choice]
 - two whole notes*
 - two half notes*
 - four quarter notes*
- d) bar lines
- e) double bar line

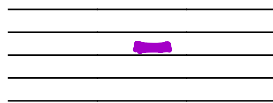


2. Draw each of the following musical symbols on the staves provided.

a) whole rest



b) half rest



c) quarter rest

