

LESSON 15

Date: _____

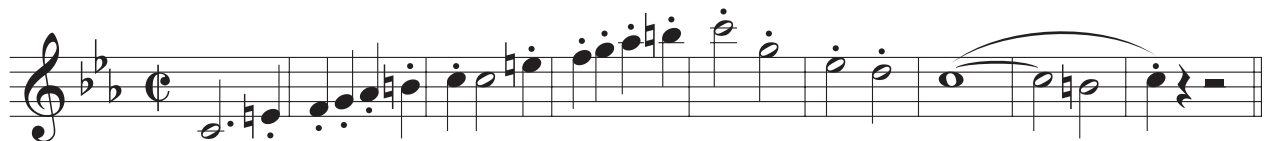
Many of the harmony practices in use today were developed during the common practice period (1600 – 1900). Tonality, music which is based on a key and uses specific harmonic structures, is one of the most common organizing principles in music.

If music is tonal and employs the use of a key signature, follow these steps to determine the key of the music.

1. Determine the key signature.
The key signature indicates the major or relative minor possibilities for the key.
2. Analyze any accidentals in the music.
Accidentals are usually an indicator of music in a minor key. Observe any raised 7th scale degrees (harmonic minor) or any raised 6th and 7th scale degrees (melodic minor). At times, melodies will make use of accidentals that do not necessarily indicate a minor key. These chromatic notes colour the melody, adding interest and variety, while having no impact on the key.
3. Analyze the first and last notes of the melody.
Tonal music places great importance on the tonic and dominant scale degrees and triads. As a result, tonal melodies often start on a note that belongs to the tonic or dominant triads. They generally end with a note from the tonic triad, and most often this is the tonic note itself.

Determine the key of the following melodies.

Key: C-



Key: E+



PRACTICE

The following melodies were written by some of the most prolific composers from the common practice period. Music history is organized into time periods called eras. Determine the key of each melody, and indicate the birth and death years of each composer in the blank beside their name.

The Baroque Era (1600 – 1750) _____

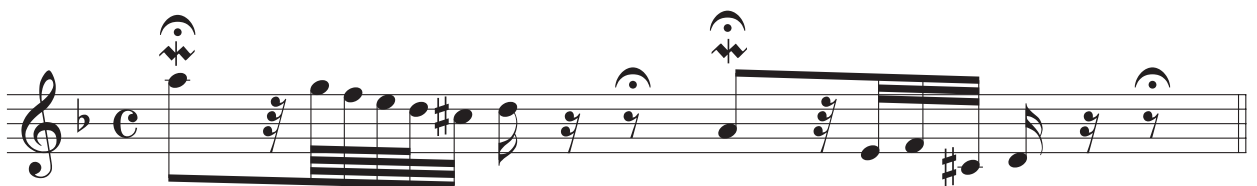
Key: D+ Claudio Monteverdi (1567 – 1643)



Key: G- Jean-Baptiste Lully (1632 – 1687)



Key: d- Johann Sebastian Bach (1685 – 1750)

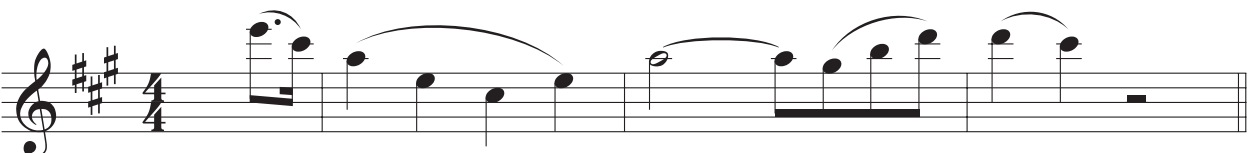


Key: Bb+ George Frideric Handel (1685 – 1759)



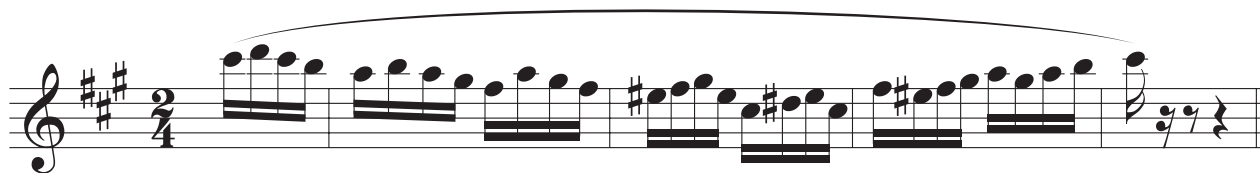
The Classical Era (1750 – 1825) _____

Key: A+ Franz Joseph Haydn (1732 – 1809)



Key: f#-

Wolfgang Amadeus Mozart (1756 - 1791)



Key: Ab+

Ludwig van Beethoven (1770 - 1827)



The Romantic Era (1825 - 1900) _____

Key: C+

Felix Mendelssohn (1809 - 1847)



Key: C-

Johannes Brahms (1833 - 1897)



Key: G+

Edward Elgar (1857 - 1934)

