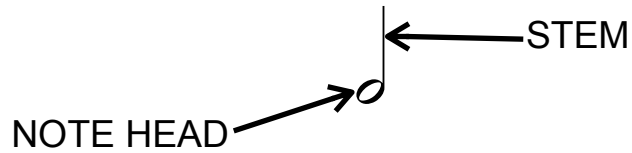


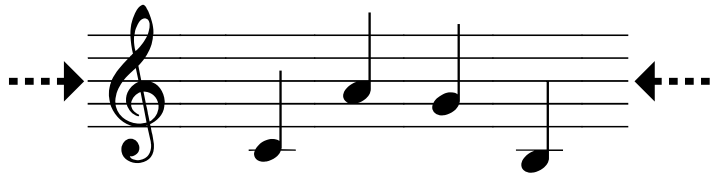
LESSON 14

Date: _____



THE STEM RULE

1. Notes *below* the third line:



UP/RIGHT



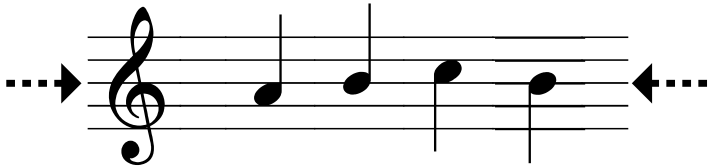
2. Notes *above* the third line:



DOWN/LEFT

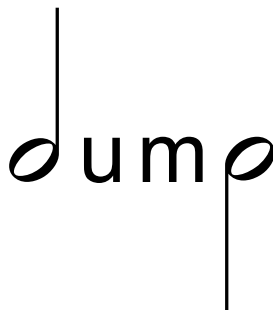


3. Notes *on* the third line:



UP or DOWN

4. *Stem Length* = 3 spaces [or one octave or from note head to the next line or space with the same letter name.]



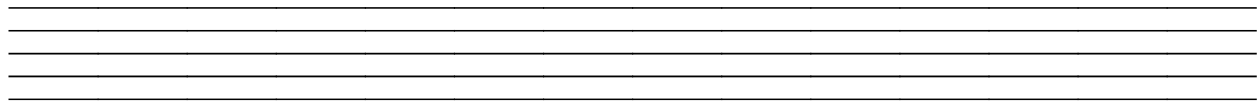
PRACTICE

1. Add stems to the following note heads. Remember the rules:

- a) up/right
- b) down/left
- c) length



2. Draw the treble clef and write the indicated notes.



C
whole

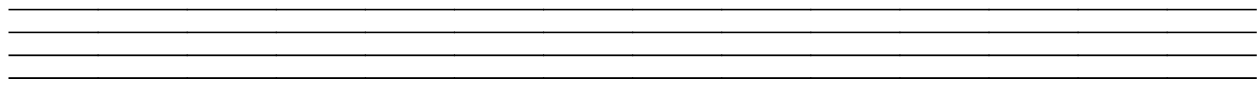
A
quarter

E
half

F
whole

B
quarter

3. Draw the bass clef and write the indicated notes.



D
quarter

G
half

E
half

A
whole

C
quarter