

LESSON 2

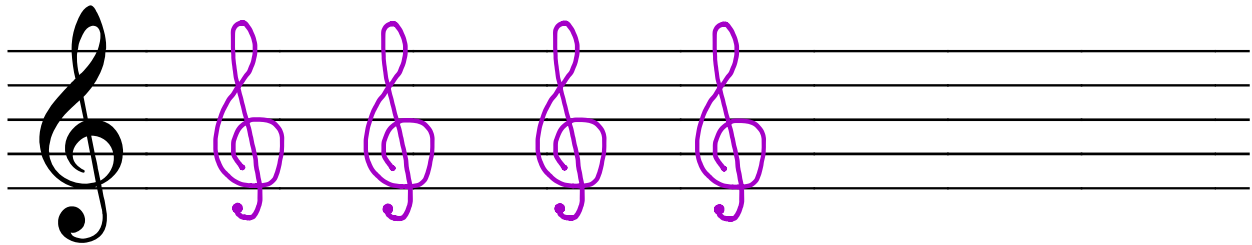
Date: _____

The TREBLE CLEF

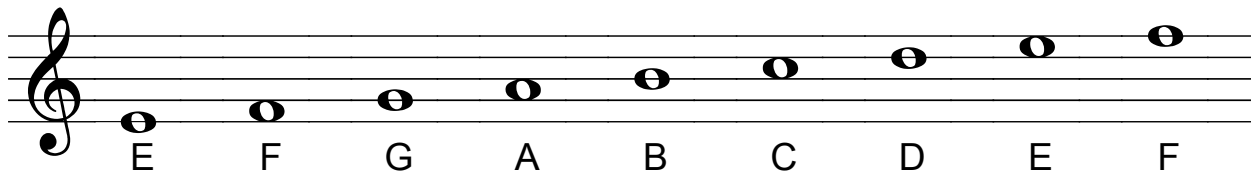
Practice drawing the treble clef
by tracing over these 4 examples.



Draw 4 examples of the treble clef on the staff.



Each note on the treble clef is assigned a LETTER NAME.



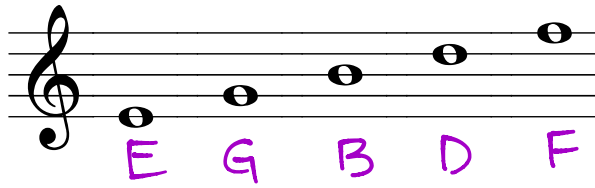
What patterns do you notice? *The letters are in alphabetical order.*

What letters does the musical alphabet use? A B C D E F G

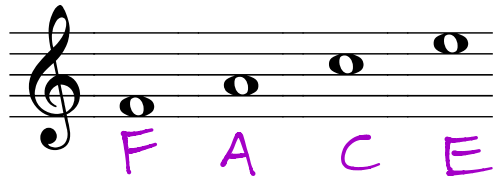
The treble clef is also called the "G" clef. How can this help you to remember all the letter names? *The treble clef swirls around the second line. This line is the letter G. Use the alphabet to determine the remaining lines and spaces.*

To memorize letter names, use the musical alphabet, or separate the notes by lines and spaces.

Lines



Spaces



PRACTICE

Write the letter name under each of the following notes. Use CAPITAL letters.

