

LESSON 21

Date: _____

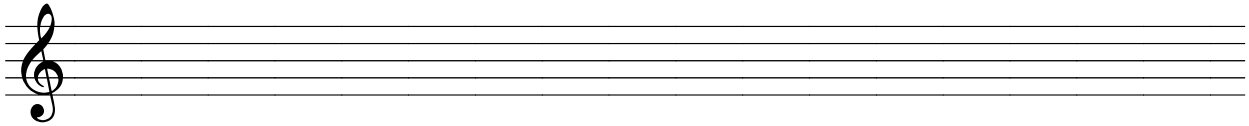
Theme and Variation

A compositional procedure in which a musical theme is stated and then altered in successive statements. This form can occur as an independent piece or as a movement of a multi-movement cycle.

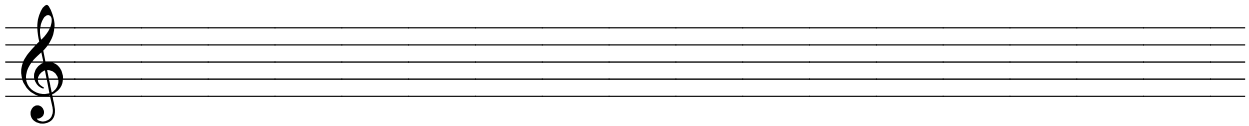
PRACTICE

1. Using a key signature and whole notes, write each scale one octave ascending and descending.

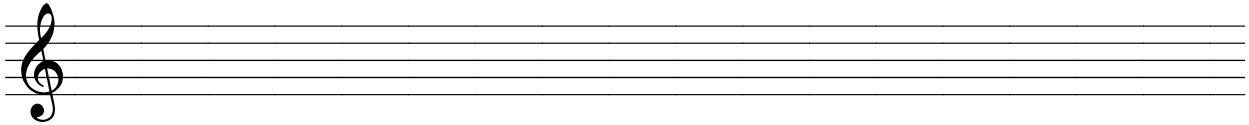
B \flat +



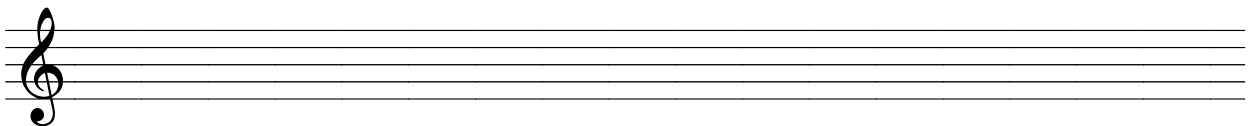
g – (relative harmonic minor)



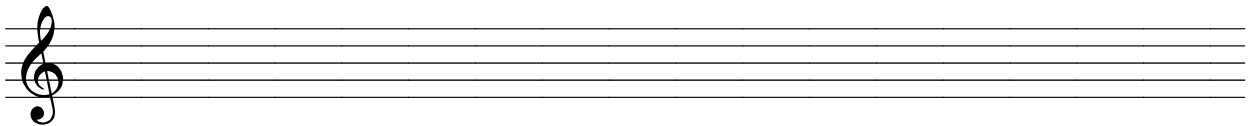
b \flat – (parallel melodic minor)



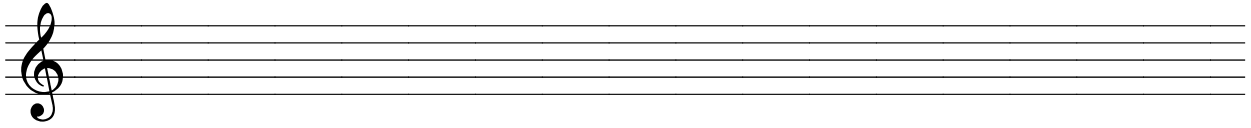
B \flat + whole tone



B \flat major pentatonic



B♭ blues

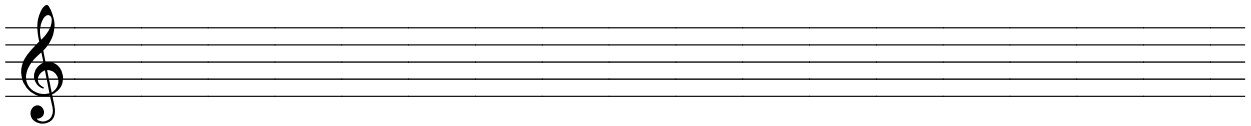


2. Rearrange the following melody using each of the following scales. If necessary, you may make alterations to the melody and rhythm in order to strengthen the particular tonality required. It is important that the changes not obscure the musical ideas of the original melody.

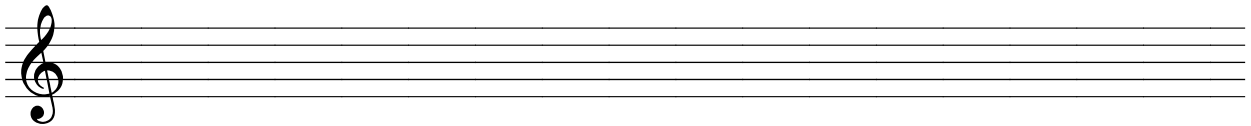
Theme



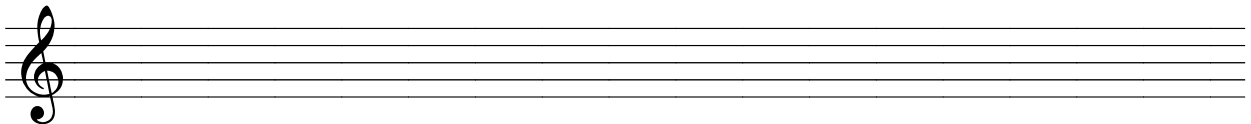
Variation #1: Relative Harmonic Minor



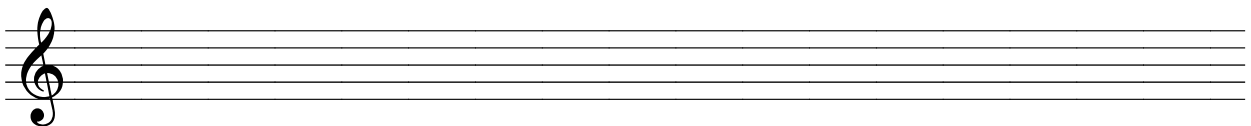
Variation #2: Parallel Melodic Minor



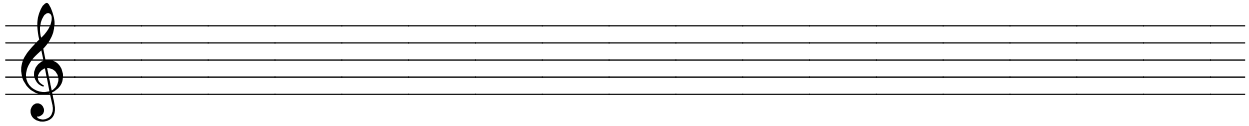
Variation #3: Whole Tone



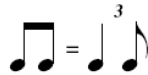
Variation #4: Major Pentatonic



Variation #5: Blues



Note: When writing blues music, a common rhythm technique called swing is employed. A rhythmic indicator at the start of the music tells the performer to “swing” all the eighth notes. In a pure triplet swing feel, the second eighth note of every pair (the backbeat) is played as though it’s the last note of a triplet, as shown here.

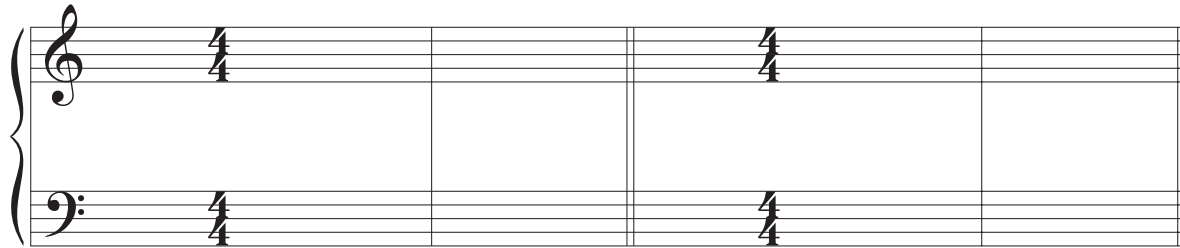


Swung eighths are in contrast to straight eights which are played with the standard equal duple subdivision.

3. Write the indicated cadences in the given keys. Write the Roman numeral figure under each chord.

B \flat +: PAC

g -: IAC



COMPOSITION TASK: PART 1

Compose a minimum 8-bar melody in question and answer form. Then, compose one variation of your melody exploring a major, minor, whole-tone, pentatonic, or blues tonality.

1. Phrases should be symmetrical in length and melodic construction. The first phrase must end with a half cadence. The second phrase must end in an authentic cadence.
2. You may be required to perform your composition on your instrument. Be sure to compose within the playable range of your instrument.
3. Use of expression markings (tempo, dynamics, and articulation) must all be incorporated in your composition.

Rough Draft

The image contains 15 blank musical staves, each consisting of five horizontal lines. These staves are arranged vertically down the page, providing a space for a rough draft of musical notation.