

LESSON 8

Date: _____

Transposition by Interval or Key

When transposing music, always transpose with respect to the key. Identify the original key/tonic then determine the transposed key/tonic. After the transposed key is in place, transpose notes up or down the required interval of transposition.

To transpose notes that have an accidental, identify the function of the accidental in the original passage. If the accidental served to raise or lower a note by a semitone, then choose an appropriate accidental in the transposed passage that will serve the same purpose. Note: Simply recopying the accidental is not sufficient. Depending on the transposed key signature it may be necessary to raise a note using a natural symbol as opposed to a sharp symbol.

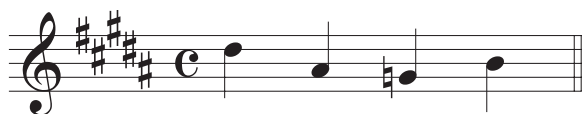
The quality of music (major or minor) will not change in transposed music. As a result, it is not necessary to consider whether a passage is in a major or minor key. Rather, choose one mode and complete all transpositions within that mode.

1. Complete the following chart.

Original Key	Original Tonic	Transposition	Transposed Tonic	Transposed Key
<p>key: _____</p>		down a +3		<p>key: _____</p>
<p>key: _____</p>		into the key of E+		<p>key: _____</p>

2. Transpose the following melodic fragments as indicated.

a) up a -6



key: _____

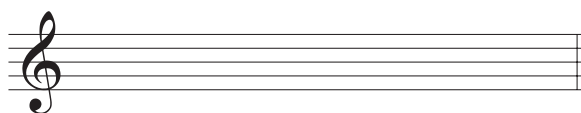


transposed key: _____

b) into the key of Gb+



key: _____



transposed key: Gb+

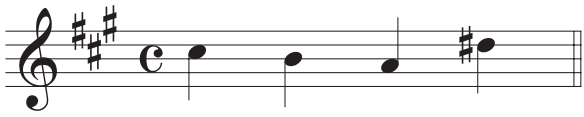
PRACTICE

1. Complete the following chart.

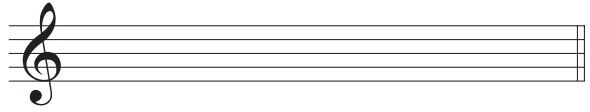
Original Key	Original Tonic	Transposition	Transposed Tonic	Transposed Key
<p>key: _____</p>		down a +3		<p>key: _____</p>
<p>key: _____</p>		down a +6		<p>key: _____</p>
<p>key: _____</p>		up a P5		<p>key: _____</p>
<p>key: _____</p>		down a +2		<p>key: _____</p>
<p>key: _____</p>		into the key of D \flat +		<p>key: _____</p>
<p>key: _____</p>		into the key of f \sharp -		<p>key: _____</p>
<p>key: _____</p>		into the key of F+		<p>key: _____</p>

2. Transpose the following melodic fragments as indicated.

a) up a -3



key: _____

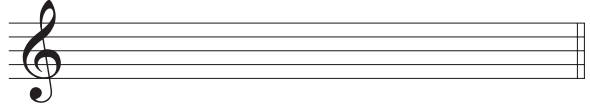


transposed key: _____

b) down a +7



key: _____

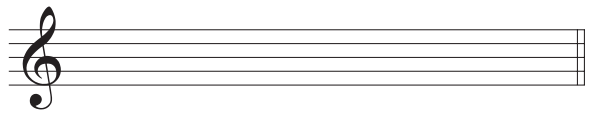


transposed key: _____

c) into the key of E b +



key: _____

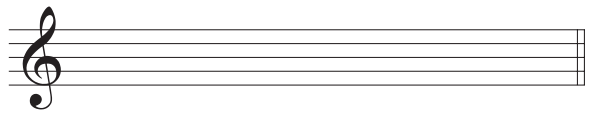


transposed key: _____

d) down a P5



key: _____



transposed key: _____

e) into the key of B+



key: _____



transposed key: _____