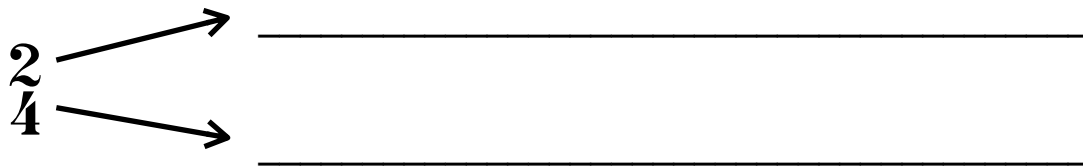


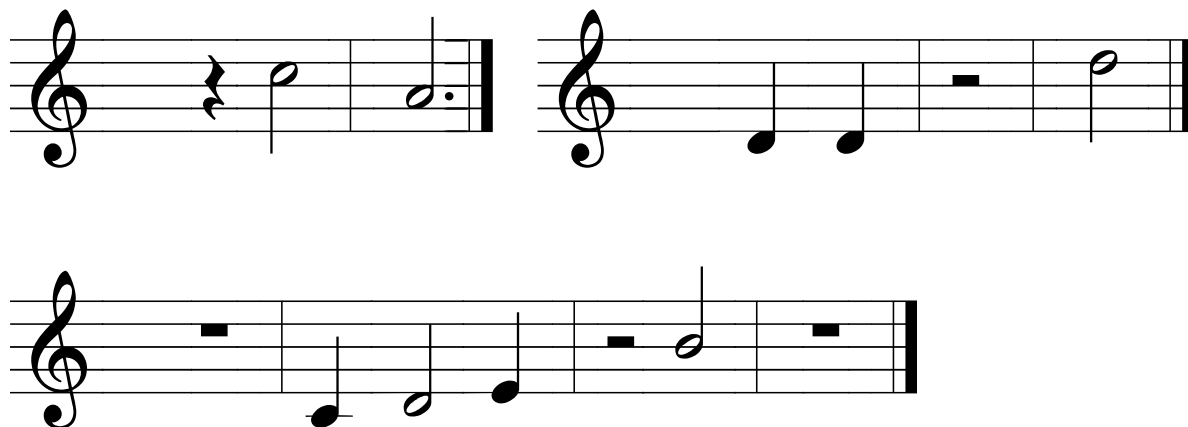
# LESSON 13: REVIEW

Date: \_\_\_\_\_

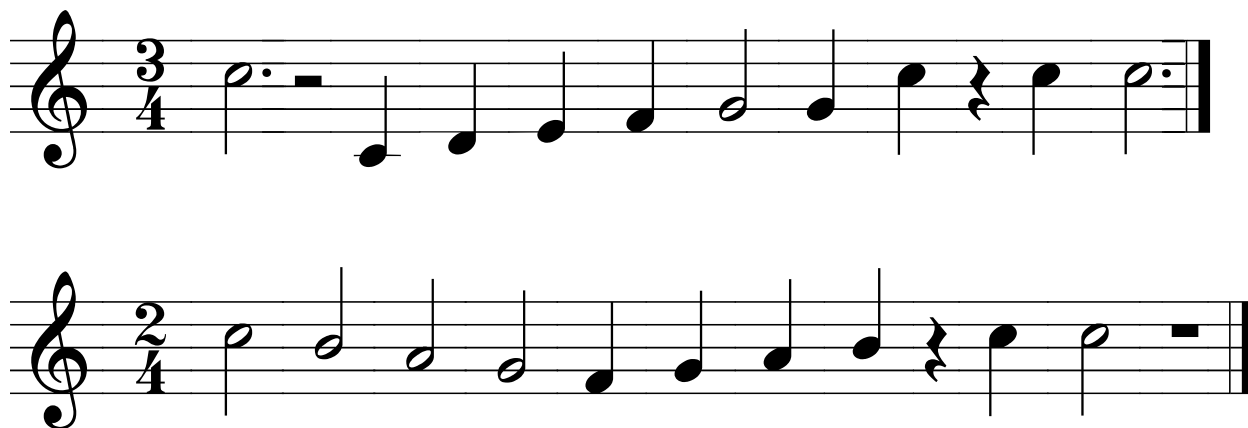
1. Explain what each of the numbers mean in the following time signature.



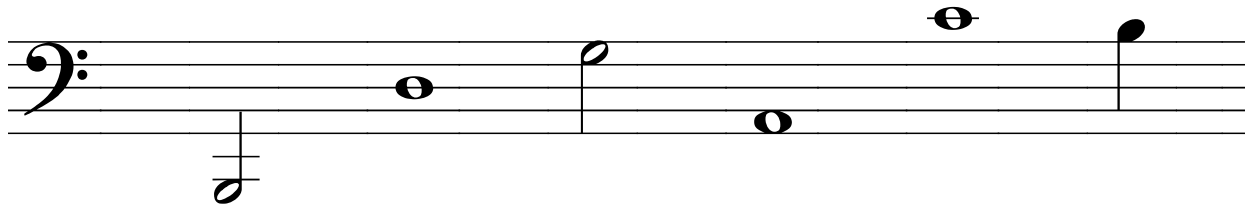
2. Add the correct time signature for each of the following musical bars.



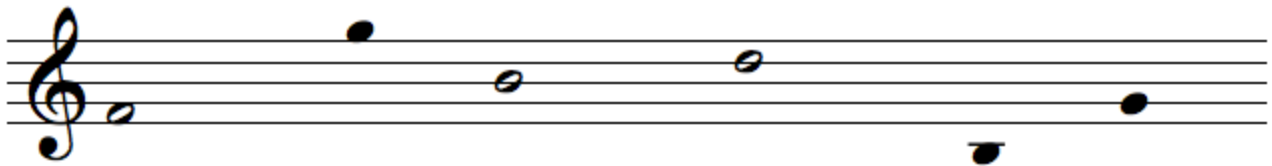
3. Add bar lines to the following music.



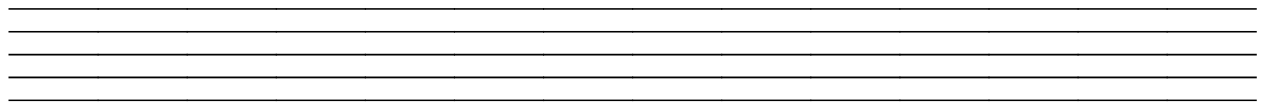
4. Write the letter name under each of the following notes. Use CAPITAL letters.



5. For each of the following note heads, draw the stems in the correct direction.



6. Draw the bass clef and write the indicated notes. Be sure to use the stem rule.



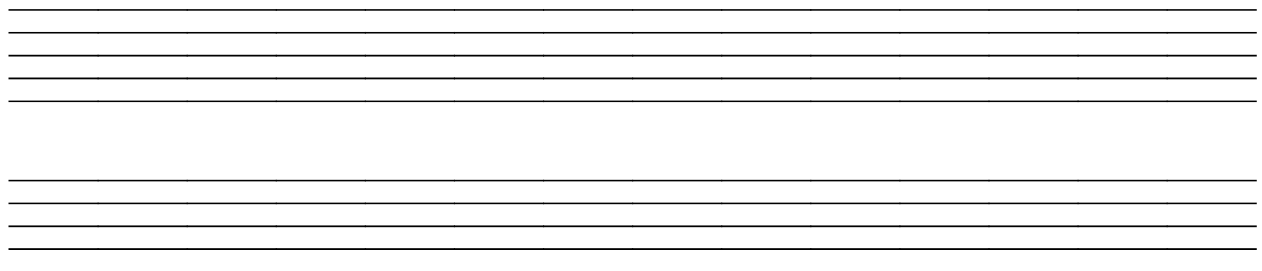
D  
half note

F  
quarter note

C  
whole note

A  
dotted half note

7. Make a grand staff using the two staves below, then write each of the indicated notes in *four* places on the grand staff.



B

E

G

D